

# Contents

CMD's Message.....	1
Introduction.....	2
Profile.....	4
Organizational Chart of CMPDI .....	6
CMPDI Board of Directors .....	7
CSR & Sustainability Policy.....	8
CSR & Sustainability Activities.....	13
Infrastructure.....	14
Education.....	16
Healthcare.....	21
Women / Skill Development.....	23
Drinking Water/ Sports.....	24
Swachh Bharat.....	26
Sustainability.....	29
Funding of CSR activities.....	30
CSR Expenditure .....	31
Sustainability Expenditure.....	38

*This report indexes CMPDI's 2014-15 corporate social activities and works towards sustainable development. It is supplemented by information on our website ([www.cmpdi.co.in](http://www.cmpdi.co.in)) which provides a snapshot of recent activities*



## CMD's Message

I am glad to learn that CMPDI is bringing out a Corporate Social Responsibility (CSR) & Sustainability Report for the year 2014-15.

Corporate Social Responsibility is widely recognized as an important means to promote sustainable development and inclusive growth. Corporates are now judged by the stakeholders and the society at large by the initiatives taken to address sustainable issues. Societal well-being is a pre-requisite for any business to grow and prosper. Corporate have a broader responsibility to ensure that all segments within the society grow and develop in an equitable manner. CSR & Sustainability is therefore a commitment of corporates to operate in an economically, socially, environmentally sustainable manner while recognizing the interest of all its stakeholders. In CMPDI, it has been our endeavour to be responsible corporate citizen and be committed to working with the betterment of the society and communities that exist around of us. The relationship between our business and community helps us to grow.

CMPDI CSR Cell has brought out this report on CSR & Sustainability initiatives undertaken by the company (CMPDI) in last year (2014-15) so that more employees of the company are familiarize with CSR & Sustainability practices and understand the importance of giving back to the society. This report will definitely serve as a useful reference document for all our stakeholders.

In financial year 2014-15, we implemented the projects worth Rs. 181 lakhs including sustainability activities. To conclude, I would like to thank our stakeholders for their support and assure them that we are ever willing to improve and are committed towards building a sustainable community.

(A.K. Debnath)

## Introduction

As it is well known, Corporate Social Responsibility (CSR) is a Company's commitment to operate in an economically, socially and environmentally sustainable manner, while recognizing the interests of its stakeholders. Stakeholders include investors, customers, employees, business partners, local community, environment and society. Thus it can be seen that Corporate Social Responsibility is closely linked with Sustainable practices. Corporate Social Responsibility is not and should not be confined to philanthropic activities (as it used to be narrowly interpreted earlier) rather; it should facilitate the integration of social and business goals. They have to be viewed as commitments which are not only helpful for the society but also help in securing a sustainable competitive advantage for the companies. We understand Corporate Social Responsibility as a company's commitment to operate in a manner which is transparent, sustainable and increasingly satisfying to its stakeholders.

Corporate Social Responsibility seeks to achieve the convergence among the following three types of strategies:

*Environment Sustainability Strategy* - optimizing the impact of products or operations on the environment including waste/emission/effluent reduction with proper treatment.

*Social Sustainability Strategy* - optimizing the impact of products or operation on social aspects such as labour, human capital development, health, safety, regional development and community development.

*Economic Sustainability Strategy* - optimizing the financial performance and address broader economic issues such as the sustainability of business and its human capital as well as promotion of fair globalization.



Here is a brief overview of commonly accepted benefits of having a sound CSR policy which inspire us to actively take up CSR activities:

- ❖ Serving all the company's stakeholders is accepted as the best way to produce long term success and to create a growing, prosperous company.
- ❖ The company's products and technologies are directed to contribute to the benefits and welfare of the people.
- ❖ The company creates win-win relationship with their stakeholders.
- ❖ The company grows hand-in-hand with their employees supporting them to reach their full potential and improve their standard of living.
- ❖ Company prosperity is directly linked to the prosperity of customers, suppliers and shareholders.
- ❖ CSR helps to create positive image of the company through its activities.

At CMPDI, we view CSR as a way of conducting business, which enables us to distribute "growth" within our stakeholders in a better manner. The implementation and integration of ethical systems and sustainable management practices also form a key component of our CSR policy. At CMPDI, we do not believe CSR to be emanating directly from external demands; instead we see it as a process by which our managers evolve our relationship with our stakeholders for the common good and we demonstrate our commitment in this regard by adoption of appropriate business processes and strategies. We have already emphasized that CSR and sustainable development are two sides of the same coin and so we believe in the philosophy that economic and industrial development must go on in such a way that no irreparable damage be done to the environment.



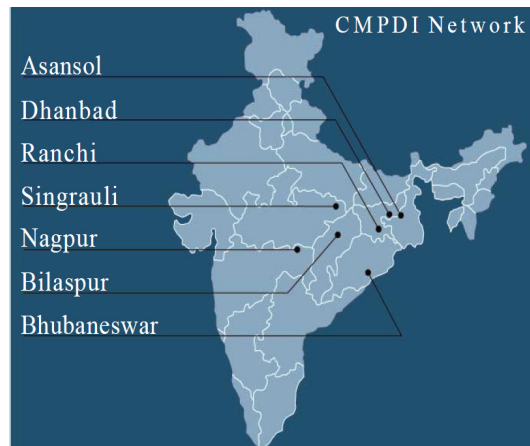
## Profile

CMPDI (Central Mine Planning & Design Institute Limited), an ISO-9001 company, holds the pre-eminent position as the India's largest consultancy organization and the market leader in an expanding earth resource sector. In May 2009, CMPDI got the status of Mini Ratna (Category – II). A key factor in this success has been the offering of full-range of services in the sphere of resource exploration & development in:

- Exploration
- Mining
- Coal Preparation
- Coal Utilization and Management
- Coal Technology
- Coal / Material Handling Arrangement
- Engineering, and
- Environmental Management.



CMPDI was established in the year 1975 as a subsidiary of Coal India Limited (a Government of India Public Sector Undertaking). CMPDI operates through its headquarters at Ranchi and seven Regional Institutes designated as RI-I to RI-VII located at Asansol, Dhanbad, Ranchi, Nagpur, Bilaspur, Singrauli and Bhubaneswar respectively. Seven Regional Institutes render consultancy services to seven corresponding subsidiaries of CIL viz. ECL (RI-I), BCCL (RI-II), CCL (RI-III), WCL (RI-IV), SECL (RI-V), NCL (RI-VI), & MCL (RI-VII). Consultancy services to CIL (HQ), NEC & non-CIL clients are provided mainly through CMPDI (HQ). CMPDI also handles specialized assignments of Ministry of Coal and CIL. CMPDI provides consultancy services as also turnkey execution of projects to various organisations in India and abroad.



## MISSION

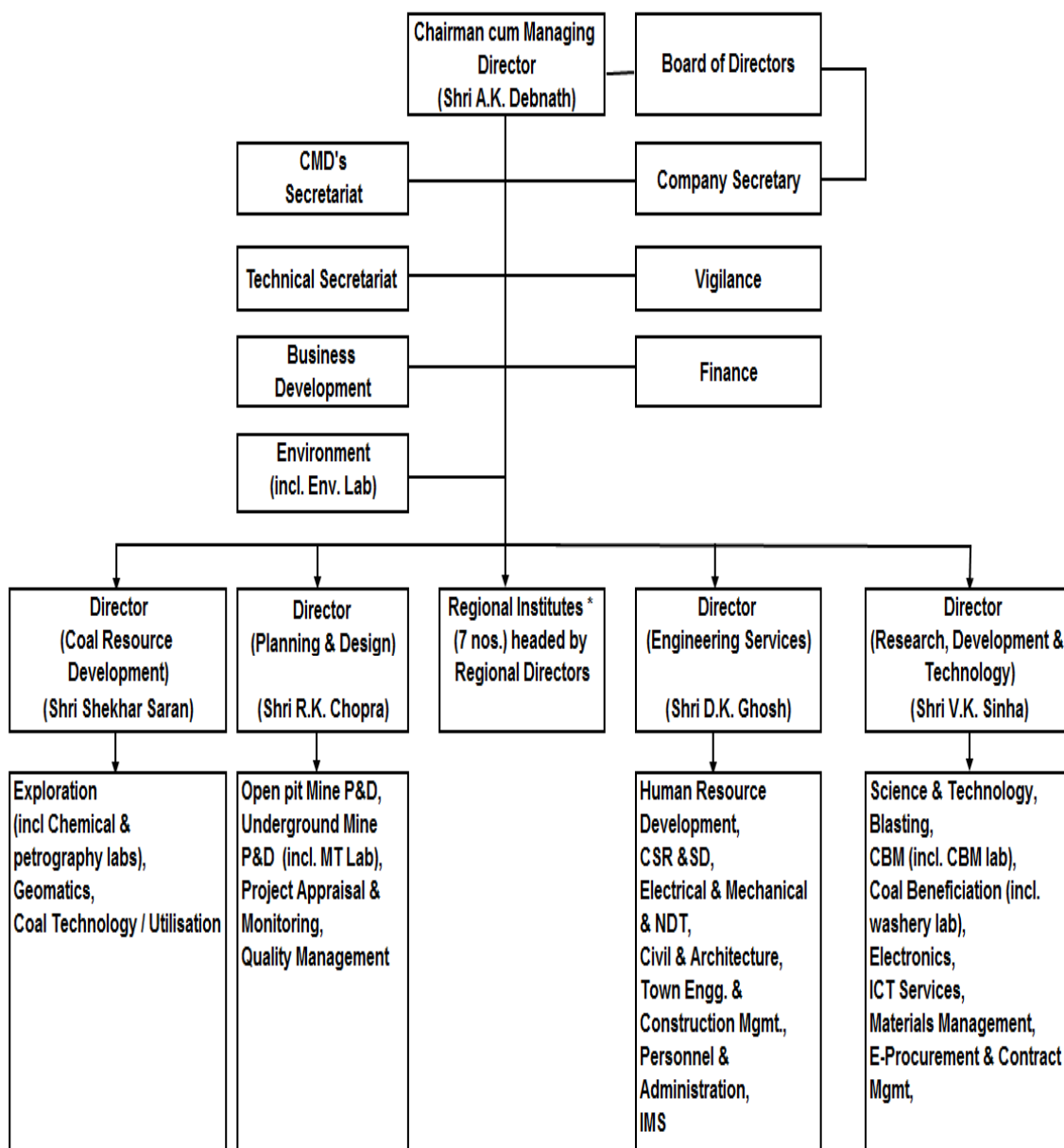
The Mission of CMPDI is to provide total consultancy in Coal and mineral exploration, mining, engineering and allied fields as premier consultants in India and a leading one in the International arena.

## VISION

The Vision of CMPDI is to be the market leader in an expanding earth resource sector and allied professional activities.

## Organizational chart of CMPDI

### ORGANISATION STRUCTURE OF CMPDI (As on 01.06.2015)



\* For various functional areas, the Regional Directors would report to respective Directors.

P&D - Planning & Design  
ICT - Information & Communication Technology  
IMS - Information Management Services (e-library, Library & Publication)

## CMPDI Board of Directors

### FULL TIME



Sri A.K. Debnath  
**Chairman-cum-Managing Director**



Sri D.K. Ghosh  
**Director (T/ES)**



Sri R.K. Chopra  
**Director (T/P&D)**



Sri Shekhar Saran  
**Director (T/CRD)**



Sri V.K. Sinha  
**Director (T/RD&T)**

### PART TIME



Sri D.N. Prasad  
**Adviser (Projects), MoC**



Sri Nagendra Kumar  
**Director (Tech.), CIL**

### NON-OFFICIAL PART TIME



Sri Rakesh Kumar Mittal  
**Independent Director**

## CSR & Sustainability Policy

CMPDI follows the CIL's Board approved CSR policy framed after incorporating the features of the Companies Act, 2013 and as per notification issued by Ministry of Corporate Affairs, Govt. of India on 27.02.2014 as well as DPE's Guidelines.

### **Objective:**

The Main objective of CSR policy is to lay down the guidelines for the coal companies to make CSR a key business process for sustainable development for the society. It aims at supplementing the role of Govt. in enhancing welfare measures of the society based on the immediate and long term social and environmental consequences of their activities. CIL will act as a good corporate citizen, subscribing to the principles of global compact for implementation.

### **Areas to be covered:**

The poor and needy section of the society living in different parts of India would normally be covered. The CSR programme will also cover the existing components of Special Corporate Plan (SCP) and Tribal Sub Plan (TSP) for the development of SC/ST population besides development components for the entire population.

For carrying out CSR activities, 80% of the budgeted amount should be spent within the radius of 25 km of the projects/mines and 20% of the budget would be spent on CSR activities within the state/states in which the subsidiary companies are operating.

### **Scope:**

As per scheduled VII of the Companies Act 2013 the following are the scope of activities under Corporate Social Activities

- I. Eradicating hunger, poverty and malnutrition, promoting preventive health care and sanitation and making available safe drinking water;
- II. Promoting education, including special education and employment enhancing vocational skills especially among children, women, elderly, and differently abled and livelihood enhancement projects;
- III. Promoting gender equality, empowering women, setting up homes and hostels for women and orphans, setting up old age homes, day care centres and such other facilities for senior citizens and measures for reducing inequalities faced by socially and economically backward groups;
- IV. Ensuring environmental sustainability, ecological balance, protection of flora and fauna, animal welfare, agro-forestry, conservation of natural resources and maintaining quality of soil, air and water;

- V. Protection of national heritage, art and culture including restoration of buildings and sites of historical importance and works of art: setting up public libraries, promotion and development of traditional arts and handicrafts;
- VI. Measures for the benefit of armed forces veterans, war widows and their dependents;
- VII. Training to promote rural sports, nationally recognized sports, Paralympics sports and Olympic sports;
- VIII. Contribution to the Prime Ministers National Relief Fund or any other fund set up by the central government for socio-economic development and relief and welfare of scheduled castes, the scheduled tribes , other backward classes, minorities and women;
- IX. Contribution or funds provided to technology incubators located within academic institution which are approved by central government;
- X. Rural development projects;

**Implementation:**

The investment of CSR should be project based and every project time framed periodic mile-stones should be finalized. Project activities identified under CSR are to be implemented by specialized agencies and generally not by staff of the organization.

**Monitoring:**

CSR cell is headed by an E8 level officer who will prepare the Annual CSR report on CSR activities and placing the same before CSR & Sustainability Development Committee. A separate/chapter is included in annual report on the implementation of CSR activities/projects including the facts relating to physical and financial progress.

The complete CSR policy of Coal India Limited (which is also followed by CMDPI) is available at [https://www.coalindia.in/DesktopModules/DocumentList/documents/CIL\\_CSR\\_Policy\\_New\\_Companies\\_Act\\_2013\\_16062014.pdf](https://www.coalindia.in/DesktopModules/DocumentList/documents/CIL_CSR_Policy_New_Companies_Act_2013_16062014.pdf)

## Major Areas of CSR & Sustainability

INFRASTRUCTURE DEVELOPMENT

EDUCATION

HEALTH-CARE

SUSTAINABILITY

DRINKING WATER



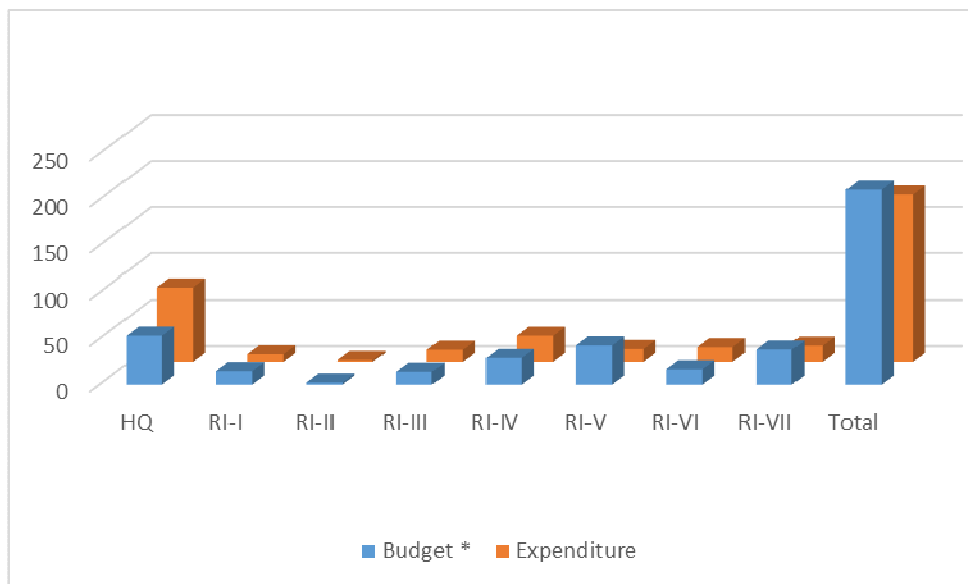
## Last 2 years CSR Budget & Expenditure

### Year wise fund utilized in CSR & Sustainability activities

Unit of CMPDI	Year wise fund utilized in CSR & Sustainability activities (Rs in Lakhs)			
	2013-14		2014-15	
	Budget	Expenditure	Budget *	Expenditure
HQ	80.56	<b>68.76</b>	53.32	<b>80.78</b>
RI-I	10.00	<b>15.80</b>	14.65	<b>8.38</b>
RI-II	4.31	<b>3.80</b>	2.10	<b>2.06</b>
RI-III	10.35	<b>10.36</b>	14.00	<b>13.25</b>
RI-IV	21.00	<b>27.46</b>	29.20	<b>28.48</b>
RI-V	24.00	<b>30.09</b>	42.70	<b>14.06</b>
RI-VI	10.00	<b>15.86</b>	16.75	<b>16.21</b>
RI-VII	22.00	<b>29.24</b>	38.27	<b>17.7</b>
Total	<b>182.22</b>	<b>201.37</b>	<b>210.99</b>	<b>180.92</b>

\* Budget Restricted to Rs. 200.00 Lakhs only

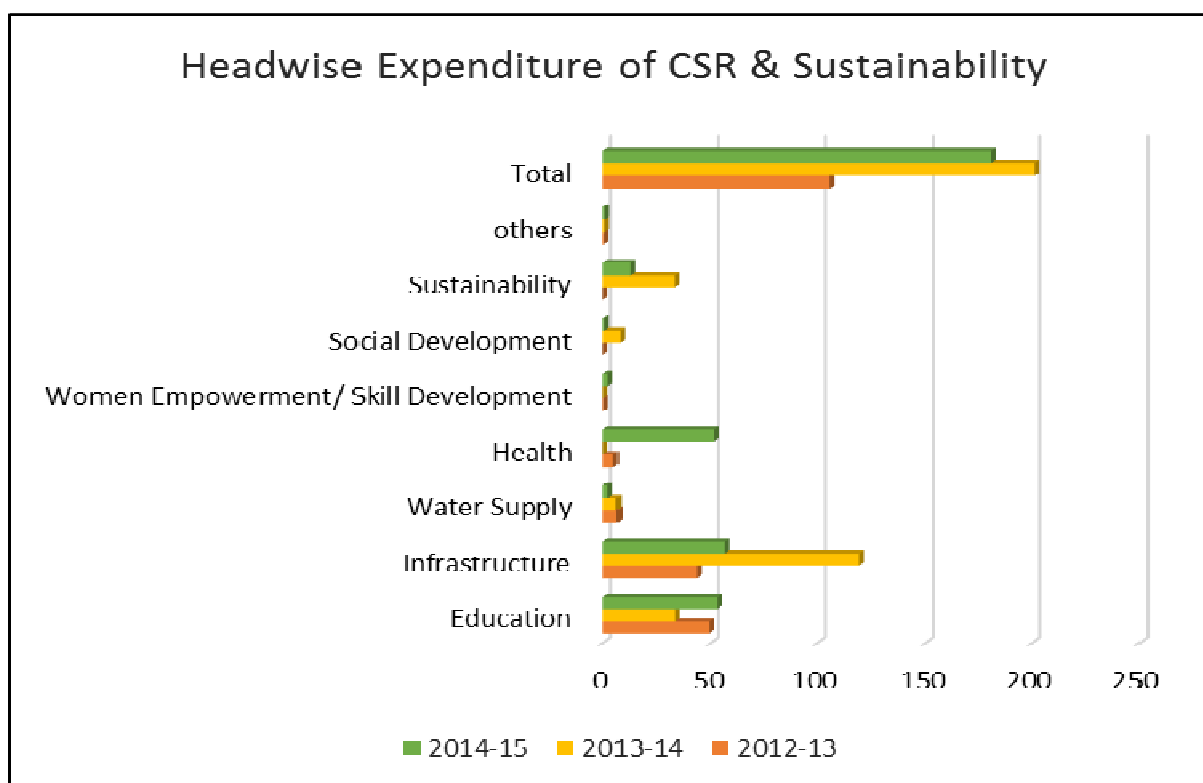
### CSR Budget & Expenditure for 2014-15





## Head-wise Expenditure on CSR & Sustainability

Sl. No.	Areas	2012-13 (Rs. In Lakhs)	2013-14 (Rs. In Lakhs)	2014-15 (Rs. In Lakhs)
1	Education	49.50	33.39	53.27
2	Infrastructure	43.77	119.7	56.78
3	Water Supply	6.65	6.18	2.32
4	Health	4.96	-	51.70
5	Women Empowerment/ Skill Development	0.39	0.12	2.46
6	Social Development	-	7.85	0.82
7	Sustainability	-	33.22	12.53
8	others	0.65	0.91	1.04
	<b>Total</b>	<b>105.92</b>	<b>201.37</b>	<b>180.92</b>



## CSR & Sustainability Activities

As we have already stated here and in our previous CSR Report, we, at CMPDI believe that our CSR and Sustainability activities should address social, economic and environmental concerns and their selection has to be based on their social, economic and environmental impact thereof, rather than mere output or outcomes. CMPDI actively contribute to the social and economic development of the communities in which we operate. In doing so, build a better, sustainable way of life for the weaker sections of society and contribute to raise the country's human development index.

It is expected from us that we being a socially responsible public sector enterprise, would take initiatives to promote organizational integrity and ethical business practices through transparency in disclosure and reporting procedures, and contribute to inclusive growth and equitable development in society through capacity building measures, empowerment of the marginalized and underprivileged sections / communities.

Our focus is on the all-round development of the communities around our drilling sites located mostly in rural areas and tribal belts. CMPDI (HQ) and all our Regional institutes (I to VII) have CSR Committee which are the implementation bodies.

Our partners in development are government bodies, district authorities, village panchayats and the end beneficiaries — the villagers.

All projects are planned in a participatory manner, in consultation with the community, literally sitting with them, and gauging their basic needs; after discussion with the village panchayats we priorities the requirements.

Our CSR & Sustainability activities focus areas are Infrastructure, Education, Drinking water, Women/Social Development & Sustainability.

CMPDI reiterates its commitment to social responsibility towards CSR & sustainability by integrating social and environmental concerns in day-to-day business operations. Our Board Level CSR committee for 2014-15 was chaired by Independent Director with Director (T/ES) & Director (T/P&D) as its members.

Keeping in view the special nature of its business, CMPDI has initiated its CSR & Sustainability activities and an overview of our activities pursued in 2014-15 is enlisted in the following pages.

# Highlights of CSR Activities

## Infrastructure

- ❖ Construction of two classroom at Birsa High School, Kanke Road, Hathiagonda, Ranchi, Jharkhand.
- ❖ Construction of two toilet complexes (one each for Boys & Girls) at Adivasi Vikas Bal Vidhyalaya, Gadhdipa, Sarsa, Block Lapung, Ranchi, Jharkhand.
- ❖ Construction of Platform & Shed in community place at Datma village of Orla Panchayat (Mandu block), Jharkhand.
- ❖ Construction of Hall with stage at Zilla Parishad Higher primary School, Sonegaon, Chimur Dist. Chandrapura, Maharashtra.
- ❖ Construction of two toilet complexes (one each for Boys & Girls) at Shivaji High School, Rajura, Maharashtra.
- ❖ Construction of toilet at Zilla Parishad School, Nari, Nagpur, Maharashtra
- ❖ Construction of RCC Stage and Kitchen Shed at Zilla Parishad School, Nandori, Warora, Dist. Chandrapura, Maharashtra.
- ❖ Construction of Community Hall at Brahmanbil Village, Chhendipada, Orissa.
- ❖ Construction of Kalyan Mandap at Kosala village, Orissa (under construction – part completed).
- ❖ Construction of 2 Class-rooms & Laboratory rooms at Deorikhurd, Chhattisgarh.



Figure 1: Toilet Complex for boys & girls in Adivasi Bal Vikas Vidyalaya, Lapung, Ranchi, Jharkhand by CMPDI, RI-III, Ranchi



Figure 2: Shed-cum-Platform in Datma village, Orla, Jharkhand by CMPDI, RI-III, Ranchi



Figure 3: Hall with stage at Zilla Parishad School, Sonegaon, Chandrapura, Maharashtra by CMPDI, RI-IV, Nagpur



Figure 4: RCC stage with Kitchen shed at Zilla Parishad School, Nandori, Maharashtra by CMPDI, RI-IV, Nagpur



Figure 5 Construction of toilet complexes Zilla Parishad School, Nari, Nagpur, Maharashtra



Figure 6 Construction of two toilet complexes (one each for Boys & Girls) at Shivaji High School, Rajura, Maharashtra.



Figure 7: Community Hall at Brahmanbil Village, Odisha by CMPDI, RI-VII, Bhubaneswar



Figure 8: Construction of two classroom at Birsa High School, Kanke Road, Ranchi by CMPDI (HQ)

## Education

*"Learning gives creativity, Creativity leads to thinking, Thinking provides knowledge, Knowledge makes you great"*  
-Abdul Kalam

Educational support like supply of study materials, benches, uniforms, financial support/ assistance in the form of scholarship are being provided by CMPDI to different schools.

- ❖ Financial Assistance for celebration of Annual day, Independence Day & Republic Day at Gondwana Primary School, Kanke Road, Ranchi.
- ❖ Financial Assistance for celebration of Annual day, Independence Day & Republic Day at Birsa High School, Kanke Road, Ranchi.
- ❖ Distribution of 100 sets (3-seater) of Desk-benches for the students of Adivasi Bal Vikas Vidhyalaya, Gadhdipa, Sarsa, Lapung, Ranchi, Jharkhand.
- ❖ Distribution of 3-seater Desks and benches (30 sets) for the students of Rajyakriyakrit Prathmik Vidyalaya, Mayapur, Ranchi & Desk benches (70 sets) for the students of Rajyakriyakrit Prathmik Vidyalaya, Lapra, Ranchi.
- ❖ Distribution of 160 sets of 3-seater desk-benches in the following four schools of Bhagiya Panchayat, Balumath, Latehar, Jharkhand:
  - Utkramit Primary school, Jamuniyatand- 40 nos.
  - Rajkirayat Utkramit Middle School, Bhagiya – 40 nos.
  - Rajkirayat Utkramit Middle School, Seeram – 40 nos.
  - Rajkirayat Utkramit Middle School, Okaiya – 40 nos.
- ❖ Distribution of 3-seater Desks & benches 25 sets for the students of Rajyakriyakrit Prathmik Vidyalaya, Nutandih, Dhanbad & 50 sets for the students of Utkramit Madhya Vidyalaya, Damodarpur, Dhanbad.
- ❖ Distribution of 5-seater Desk & benches (50 nos.) for the students of Ethora Shrish Chandra Institution, P.O. Ethora, Dist. Burdwan, West Bengal.
- ❖ Distibution of old matirials to Asansol Vivekanand Math, Krishna Tower, Bidya Sagar Sarani, Asansol, West Bengal:
  - Drafting machines/ drawing board with stand (old & used) – 50 nos.
  - Conventional manual type writer (old & used) – 1 no.
  - CPU external frames (old & used) – 4 nos.
  - Monitor external frames (old & used) – 3 nos.
  - Printer external frames (old & used) – 1 no.
  - Key board external frames (old & used) – 2 nos.
  - Wooden table (old & used) – 20 nos.
  - Chairs (old & used) – 50 nos.
  - GI water tanks (old & used) – 23 nos.



- ❖ Distribution of school uniform (Sweaters) to 262 students of Gondwana Primary School, Kanke Road, Ranchi and 200 students of Birsa High School, Kanke Road, Ranchi.
- ❖ Reimbursement of the cost of electricity charges especially for hydro-therapy & Physio-therapy purposes of the students of Asansol Anandam (a Special Child Development & Vocational Training Centre).
- ❖ Sponsorship of 10 students who are physically & Mentally retarded, hearing impaired etc. of Asansol Anandam (a Special Child Development & Vocational Training Centre) for the year 2014-15.
- ❖ Payment of school fees of Rs. 40,800 (Rupees forty thousand eight hundred only) to 20 nos. of Poor & Meritorious students of Gondwana Primary School, Ranchi & Rs. 83,700 (Rupees eighty three thousand seven hundred only) to 42 nos. of Poor & Meritorious students of Birsa High School, Ranchi for 1 year period.



Figure 9: Financial assistance for Independence Day, Annual Day & Republic Day to Gondwana Primary school by CMPDI (HQ), Ranchi



Figure 10: Independence Day celebration in Gondwana Primary School, Ranchi



Figure 11: Financial assistance for Independence Day & Republic Day to Birsa High school by CMPDI (HQ), Ranchi



Figure 12: Independence Day celebration in Birsa High School, Ranchi



Figure 13: Distribution of Desk-Benches to Adivasi Bal Vikas Vidyalaya, Lapung Ranchi by CMPDI, RI-III, Ranchi



Figure 14: Distribution of Desk-Benches to Rajyakriyat Primary school, Mayapur, Ranchi by CMPDI, RI-III, Ranchi



Figure 15: Distribution of Desk-Benches to Rajyakriyat Primary school, Lapra, Ranchi by CMPDI, RI-III, Ranchi



Figure 16: Distribution of Desk-Benches to Rajyakriyat Utkramit Middle school, Bhagiya, Balumath, Jharkhand by CMPDI, RI-III, Ranchi



Figure 17: Distribution of Desk-Benches to Utkramit Primary school, Jamuniyatand, Balumath, Jharkhand by CMPDI, RI-III, Ranchi



Figure 18: Distribution of Desk-Benches to Rajyakriyat Utkramit Middle school, Seeram, Balumath, Jharkhand by CMPDI, RI-III, Ranchi





Figure 19: Distribution of Desk-Benches to Rajyakriyat Utkramit Middle school, Okaiya, Balumath, Jharkhand by CMPDI, RI-III, Ranchi



Figure 20: Distribution of Desk-Benches to Ethora Shrish Chandra Institution, Burdwan, West Bengal by RI-I, Asansol



Figure 21: Distribution of Desk-Benches to Rajyakriyakrit Prathmik Vidyalaya, Nutandih, Dhanbad, Jharkhand by CMPDI, RI-II, Dhanbad



Figure 22: Distribution of Desk-Benches to Utkramit Madhya Vidyalaya, Damodarpur, Dhanbad, Jharkhand by CMPDI, RI-II, Dhanbad



Figure 23: Distribution of School Uniform (Sweaters) to Gondwana Primary School, Ranchi, Jharkhand by CMPDI, HQ, Ranchi



Figure 24: Distribution of School Uniform (Sweaters) to Birsa High School, Ranchi, Jharkhand by CMPDI, HQ, Ranchi





Figure 25: School fees to Poor & Meritorious students of Birsa High School, Ranchi, Jharkhand by CMPDI, HQ, Ranchi



Figure 26: School fees to Poor & Meritorious students of Gondwana Primary School, Ranchi, Jharkhand by CMPDI, HQ, Ranchi



Figure 27: Sponsorship of 10 (Physically & Mentally retarded) students of Asansol Anandam, West Bengal by CMPDI, RI-I, Asansol



Figure 28: Reimbursement of electricity charges of Asansol Anandam, West Bengal by CMPDI, RI-I, Asansol

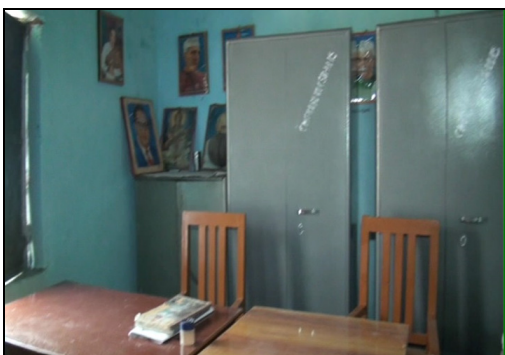


Figure 29: Distribution of Almirah, Table & Chairs to Shaskiya Prathmik Vidyalaya, & Shashkiya Madhya Vidyalaya, Itma, Singrauli by CMPDI RI-VI, Singrauli



Figure 30: Distribution of Desk & Benches to Shaskiya Prathmik Vidyalaya, Singrauli by CMPDI RI-VI, Singrauli

## Health Care

*“Health is like money, we never have a true idea of its value until we lose it.”*

*-Josh Billings*

CMPDI under Healthcare initiative provided Medical Equipment's & Financial Assistance to different Charitable Hospitals.

- ❖ Financial Assistance of Rs. 15 Lakhs for maintaining a Single Hospital Bed at Ramakrishna Mission Tuberculosis Sanatorium, Tupudana, Ranchi, Jharkhand.
- ❖ Financial Assistance of Rs. 19.80 Lakhs for installation of a High Frequency 100 mA X-Ray machine with Computerized Radiography (CR) system to Ramakrishna Mission Tuberculosis Sanatorium, Tupudana, Ranchi, Jharkhand.
- ❖ Financial Assistance of Rs. 11.40 lakhs to K.C. Roy Memorial Charitable Hospital for the following medical equipment's:
  - a) Auto Refractometer – 1 no.
  - b) Anaesthesia Work Station – 1 no.
  - c) Patient's beds/ Attendant bed – 22 nos.
  - d) Bed side locker – 10 nos.
  - e) Stretcher/ Medicine Trolley –3 nos.
  - f) I.V. Stand Rod – 16 nos.
- ❖ Financial Assistance of Rs. 5.50 lakhs to K.C. Roy Memorial Charitable Hospital for the following medical equipment's:
  - a) Multi-Para Monitor– 3 nos.
  - b) Syringe Pump – 1 no.
  - c) Infusion Pump – 1 no.



Figure 31: Maintenance of a bed at Ramakrishna Mission Tuberculosis Sanatorium, Tupudana, Ranchi, Jharkhand by CMPDI, HQ, Ranchi



Figure 32: Maintenance of a bed at Ramakrishna Mission Tuberculosis Sanatorium, Tupudana, Ranchi, Jharkhand by CMPDI, HQ, Ranchi



Figure 33: Cheque handed over to Seceratry Ramakrishna Mission Tuberculosis Sanatorium, Tupudana, Ranchi, Jharkhand by CMD, CMPDI



Figure 34: Installation of a High Frequency 100 mA X-Ray machine with Computerized Radiography (CR) system at Ramakrishna Mission Tuberculosis Sanatorium, Tupudana, Ranchi, Jharkhand by CMPDI, HQ, Ranchi



Figure 35: Medical Equipment's handed over to K. C. Roy Memorial Hospital Ranchi, Jharkhand by CMD, CMPDI



Figure 36: Installation of Multi-Para Monitor, Syringe Pump & Infusion Pump at K. C. Roy Memorial Hospital Ranchi, Jharkhand by CMPDI, HQ, Ranchi



Figure 37: Distribution of Patient's beds/ Attendant bed, Bed side locker, Stretcher/ Medicine Trolley & I.V. Stand Rod to K C Roy Memorial Hospital Ranchi, Jharkhand by CMPDI, HQ, Ranchi



Figure 38: Installation of Auto refractometer, Anaesthesia Work Station at K C Roy Memorial Hospital Ranchi, Jharkhand by CMPDI, HQ, Ranchi



## Skill Development/ Women Empowerment

CMPDI promoting gender equality through women empowerment initiative by supporting skill development programme for un-educated women from poor and backward sections of society.

- ❖ Distribution of 6 nos. of Sewing Machine with Training facility to Mahila samiti of Hatma Village, Ranchi under CMPDI's CSR Initiative.
- ❖ Sponsorship of 10 nos. of blind girls of Braj Kishore Netraheen Balika Vidyalaya, Ranchi for skill development training programme for a period of 1 year.
- ❖ Distribution of woollen blankets (175 nos.) to the poor villagers of Patragonda village, Kanke Road, Ranchi, Jharkhand.



Figure 39: Distribution of Sewing Machine with training facility by CMPDI to Mahila Samiti of Hatma village, Ranchi under CSR



Figure 40: Distribution of Woollen Blankets to the poor villagers of Patragonda Village, Ranchi by CMD, CMPDI



Figure 41: Distribution of Woollen Blankets to the poor villagers of Patragonda Village, Ranchi



Figure 42: Sponsorship of 10 blind girl students of Braj Kishore Netraheen Balika Vidyalaya, Ranchi for the Skill Development Training

## Drinking water

*Pure water is the world's first and foremost medicine.*

*-Slovakian Proverb*

- ❖ Drilling and Installation of borewell at Kosala Village, Odisha.



Figure 43: Drilling and Installation of borewell at Kosala Village, Odisha by CMPDI, RI-VII, Bhubaneswar

## Sports

- ❖ Financial Assistance of Rs. 25000 for organizing football tournament at Gramin Utthan Sansthan, Ranchi, Jharkhand.
- ❖ Financial assistance for organising sports day to Gondwana Primary School, Kanke Road, Ranchi, Jharkhand.
- ❖ Financial assistance for organising sports day to Birsa High School, Kanke Road, Ranchi, Jharkhand.



Figure 44: Cheque handed over to secretary, Gramin Utthan Sansthan, Ranchi, for organisation of football tournament by Director (T/ES), CMPDI



Figure 45: Football match Organised by Gramin Utthan Sansthan, Ranchi, Jharkhand





Figure 46: Sports Day celebration in Gondwana Primary School, Ranchi



Figure 47: Sports Day celebration in Gondwana Primary School, Ranchi



Figure 48: Financial assistance for sports day to Birsa High school by CMPDI (HQ), Ranchi



Figure 49: Sports Day celebration in Birsa High School, Ranchi



Figure 50: Sports day celebration at Birsa High school, Kanke Road, Ranchi

## Swachh Bharat Abhiyan

Swachh Bharat Abhiyan is a flagship national campaign which was officially launched on 2<sup>nd</sup> October 2014 at Rajghat, New Delhi by Hon'ble Prime Minister of India Shri Narendra Modi.

- ❖ Distribution of 20 nos. of Dustbins in 4 different schools of Bilaspur, Chattisgarh by CMPDI RI-V, Bilaspur
  - Government Higher Secondary Boys School, Charkabhata – 5 nos.
  - Government Higher Secondary Girls School, Charkabhata – 5 nos.
  - Government Middle School Khamtarai – 5 nos.
  - Government Middle School Nagpura – 5 nos.
- ❖ Distribution of five nos. of Dustbins at Adivasi Vikas Bal Vidhyalaya, Gadhdipa, Sarsa, Block Lapung, Ranchi, Jharkhand
- ❖ Distribution of 10 nos. of Dustbins at different govt. schools in Madhya Pradesh.
- ❖ Distribution of 10 nos. of Dustbins at different govt. schools in Maharashtra.
- ❖ Construction of two toilet complexes (one each for Boys & Girls) at Adivasi Vikas Bal Vidhyalaya, Gadhdipa, Sarsa, Block Lapung, Ranchi, Jharkhand.
- ❖ Construction of two toilet complexes (one each for Boys & Girls) at Shivaji High School, Rajura, Maharashtra.
- ❖ Construction of toilet at Zilla Parishad School, Nari, Nagpur, Maharashtra



Figure 51: Distribution of 10 nos. of Dustbin in Govt. School Singrauli by CMPDI RI-VI, Singrauli, Madhya Pradesh

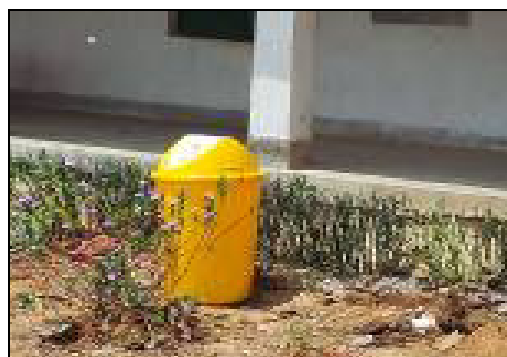


Figure 52: Distribution of 05 nos. of Dustbin Adivasi Bal Vikas Vidyalaya, Lapung, Ranchi by CMPDI, RI-III, Ranchi, Jharkhand





Figure 53: Distribution of 05 nos. of Dustbin in Government Higher Secondary Girls School Charkabhata by RI-V, Bilaspur, Chhattisgarh



Figure 54: Distribution of 05 nos. of Dustbin in Government Higher Secondary Boys School Charkabhata by RI-V, Bilaspur, Chhattisgarh



Figure 55: Distribution of 05 nos. of Dustbin in Government Middle School, Khamtarai by RI-V, Bilaspur, Chhattisgarh



Figure 56: Distribution of 05 nos. of Dustbin in Government Middle School, Nagpura by RI-V, Bilaspur, Chhattisgarh



Figure 57: Distribution of 10 nos. of Dustbin in Government School, by RI-IV, Nagpur, Maharashtra





Figure 58: Construction of toilet complexes Zilla Parishad School, Nari, Nagpur, Maharashtra



Figure 59: Construction of two toilet complexes (one each for Boys & Girls) at Shivaji High School, Rajura, Maharashtra.



Figure 60: Toilet Complex for boys & girls in Adivasi Bal Vikas Vidyalaya, Lapung, Ranchi, Jharkhand by CMPDI, RI-III, Ranchi

## Sustainability

Integrated efforts and programs are yielding expected results in sustained development and expansion of Company activities.

### ❖ **Rain Water Harvesting:**

Installation of Rain water Harvesting System is the accumulation and deposition of Rainwater for reuse on-site rather than allowing it to run-off. The harvested water may be used as drinking water as well as for storage and other purpose like irrigation. Keeping in this CMPDI has initiated to protect the environment to maintain the ground level of water by rain-water harvesting in its official/residential colonies and nearby areas. During the year 2014-15 CMPDI, RI-VI Singrauli, Madhya Pradesh installed rain-water harvesting within its premises.



Figure 61: Rain-water Harvesting pit in CMPDI, RI-VI Singrauli, Madhya Pradesh



Figure 62: Pipes to collect rain-water from the roof top of the building in CMPDI, RI-VI, Singrauli, Madhya Pradesh.

### ❖ **Energy Conservation:**

Energy conservation by replacing conventional lights by LED lights (60 nos.) by CMPDI Regional Institute-V colony, Bilaspur, Chhattisgarh. LED Lights were installed in RI-V, Bilaspur colony instead of the conventional tube-lights.

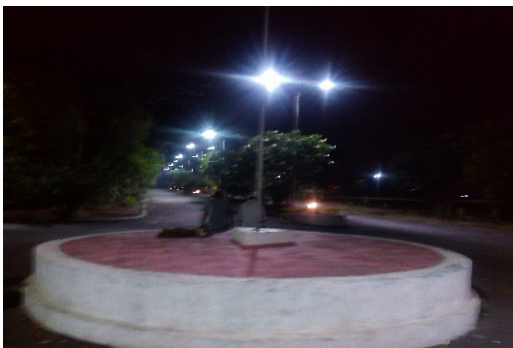


Figure 63: Energy conserving LED lights being used in CMPDI, RI-V colony, Bilaspur, Chhattisgarh



Figure 64: Energy conserving LED lights being used in CMPDI, RI-V colony, Bilaspur, Chhattisgarh

## Funding of CSR & Sustainability Activities

The CSR Budget will be mandatorily created through a board resolution as per a percentage of net profit in the following manner:

<b>Types of CPSE's Net profit (Previous Year)</b>	<b>Expenditure range for CSR in a financial year (% of profit)</b>
1) Less than Rs. 100 crore	3% - 5 %
2) Rs. 100 crore to Rs. 500 crore	2% - 3% (Subject to a minimum of Rs. 3 crore)
3) Rs. 500 crore and above	0.5% - 2%

<b>Year</b>	<b>PAT in Rs. Crores</b>
2011-12	19.61
2012-13	25.05
2013-14	19.57
<b>Average</b>	<b>21.41</b>

As per CIL guidelines the fund for the CSR as 2% of average net profit of the company, which comes to Rs. 42.82 lakhs only. After the special approval of competent authority, CMPDI allotted a fund of Rs. 200 lakhs under CSR & Sustainability activities for the year 2014-15.

## Activity wise CSR Expenditure for the Year 2014-15

CSR Budget & Expenditure for the year 2014-15							
1	2	3	4	5	6	7	8
Sl. No.	CSR Project or activity identified	Sector in which the project is covered	Projects or Programs 1) Local Area or other district where projects or programs was undertaken 2) Specify the state	Amount outlay (Budget) Project or program wise	Amount spent on the projects or programs Sub-Heads: 1) Direct expenditure on projects or programs 2) Overheads	Cumulative expenditure upto to the reporting period	Amount spent: Direct or through implementing agency
1	Construction of two class rooms in tribal areas of Ranchi	Infrastructure	Hathiagonda Ranchi, Jharkhand	13.36	Direct Expenditure	15.53135	Direct
2	Employment generation for self-help group for women, adult literacy and child development in nearby slum area	Women Empowerment	Hatma Village, Ranchi, Jharkhand	0.35	Direct Expenditure	0.22636	Direct
3	Providing support to Braj Kishore Netraheen Balika Vidyalaya like uniforms, school bags, iron beds etc.	Women Empowerment	Ranchi, Jharkhand	0.4	Direct Expenditure	0.39900	Direct
4	Gondwana Primary School, 1) Republic day 2) Independence day 3) Annual day 4) School fees to needy children 5) Sports Day 6) School uniform for the students of Gondwana School	Education	Ranchi, Jharkhand	2	Direct Expenditure	1.65824	Direct
5	Birsa High School, 1) Republic day 2) Independence day 3) Annual day	Education	Ranchi, Jharkhand	2	Direct Expenditure	2.29248	Direct

CSR Budget & Expenditure for the year 2014-15							
1	2	3	4	5	6	7	8
	4) School fees to needy children						
	5) School uniform for the students of Birsa High School						
6	Supply of desk bench for Adivasi Bal Vikas Vidhayalaya, Lapung, Ranchi	Education	Lapung, Ranchi, Jharkhand	1.92	Direct Expenditure	1.915	Direct
7	Skill Development project for the 10 Blind Students of Braj Kishore Netraheen Balika Vidhayalaya, Bariyatu, Ranchi	Skill Development	Ranchi, Jharkhand	1.8	Direct Expenditure	1.8	Direct
8	a) Maintenance of one bed at Ramakrishna (RK) Mission Tuberculosis Sanatorium, Tupudana, Ranchi	Health	Tupudana, Ranchi, Jharkhand	15	Direct Expenditure	15	Direct
	b) Financial assistance to R.K. Mission Tuberculosis Sanatorium, Tupudana, Ranchi for installation of a High frequency 100 mA X-Ray machine with Computerized Radiography system.		Tupudana, Ranchi, Jharkhand		Direct Expenditure	19.8	Direct
9	a) Financial assistance to Charitable K C Roy Memorial Hospital, Ranchi for poor & needy patients.	Health	Ranchi, Jharkhand	11.4	Direct Expenditure	11.4	Direct
	b) Financial Assistance to Charitable KC Roy Memorial Hospital, Ranchi for Medical Equipment's		Ranchi, Jharkhand		Direct Expenditure	5.5	Direct

CSR Budget & Expenditure for the year 2014-15							
1	2	3	4	5	6	7	8
10	Different items for Hatma Mahila Sangrash Sansthan, Hatma Tangra Toli, Ranchi 1) Sewing Machine – 2 nos. 2) Pikko Machine – 1 no. 3) Woollen Machine – 1 no. 4) Masala Machine - 1 no.	Women Empowerment	Hatma Village, Ranchi, Jharkhand	0.45	Direct Expenditure	0.43605	Direct
11	Spots activities in nearby villages/schools	Sports & Culture	Ranchi, Jharkhand	0.25	Direct Expenditure	0.25	Direct
12	Woollen Blankets for poor villagers of Patragonda Village, Ranchi	Social Development	Patragonda village, Ranchi, Jharkhand	0.82	Direct Expenditure	0.819	Direct
14	Seminar/Workshop /Conclave etc.	Others	Ranchi, Jharkhand	0.5	Direct Expenditure	0.5	Direct
15	Miscellaneous/Flex & Banner payment	Others	Ranchi, Jharkhand	0.1	Direct Expenditure	0.28184	Direct
16	Sponsorship of 10 (Ten) students who are physically & mentally retarded, hearing impaired etc. of Asansol Anandam, a special Child Development & Vocational Training Centre for 1 <sup>st</sup> , 2 <sup>nd</sup> , 3 <sup>rd</sup> & 4 <sup>th</sup> quarters	Education	Asansol Anandam, West Bengal	1.35	Direct Expenditure	1.35	Direct
17	Supply of 50 sets of Desks and Benches (5 seater, steel frame) to Ethora Shrish Chandra Institution.	Education	Asansol, West Bengal	1.6	Direct Expenditure	1.4155	Direct

CSR Budget & Expenditure for the year 2014-15							
1	2	3	4	5	6	7	8
18	Reimbursement of electricity charges especially for hydro-therapy & physiotherapy purposes of the students of Asansol Anandam for the year 2014-15.	Education	Asansol Anandam, West Bengal	1.2	Direct Expenditure	1.02065	Direct
19	Construction of boundary wall and fixing of grill gate for Aradanga Jordanga FP School, Post – kalla central Hospital, Dist. – Burdwan.	Infrastructure	Burdwan, West Bengal	6.5	Direct Expenditure		Direct
20	Construction of Boundary Wall and Fixing of grill gate in the main entrance with pillar for Melekhola Madhyamik Shiksha Kendra	Infrastructure	Asansol, West Bengal	4	Direct Expenditure	4.61967	Direct
22	Photography Charges	Others				0.01	Direct
23	Less:Excess Provision for CSR activities for the F.Y. 2013-14 Reversed	Others	West Bengal	Nil	Direct Expenditure	-0.03274	Direct
24	25 sets of Desk Bench for school at Nutandih, Dhanbad	Education	Nutandih & Damodarpur village, Dhanbad, Jharkhand	0.7	Direct Expenditure	2.057	Direct
25	50 sets of Desk Bench for school at Damodarpur, Dhanbad			1.4			Direct
26	Supply of Desks and Benches to Lapra Village,near Kerketta Ranchi	Education	Lapra village, Ranchi, Jharkhand	1.35	Direct Expenditure	1.3475	Direct
27	Supply of Desks and Benches to Mayapur Village,near Kerketta Ranchi	Education	Mayapur village, Ranchi, Jharkhand	0.58	Direct Expenditure	0.5775	Direct

CSR Budget & Expenditure for the year 2014-15							
1	2	3	4	5	6	7	8
28	Supply of Desks and Benches to Bhagaya Panchayat, Balumath, Latehar	Education	Bhagaya Panchayat, Latehar, Jharkhand	3.15	Direct Expenditure	3.152	Direct
29	Construction of Boys & Girls toilets at Adivasi School at Lapung, Ranchi	Infrastructure	Lapung, Ranchi, Jharkhand	3.5	Direct Expenditure	2.69	Direct
30	Provision of Dustbin in schools under "Swachh Bharat Abhiyan"						Direct
31	Construction of Community Shed at Datma Village	Infrastructure	Datma village, Ramgarh, Jharkhand	5.42	Direct Expenditure	5.48699	Direct
32	Construction of Toilets for boys and girls at Shivaji High School, Rajura	Infrastructure	Rajura village, Chandrapur, Maharashtra	4.02	Direct Expenditure	3.91958	Direct
33	Construction of cultural hall in Zilla Parishad Higher Primary School, Sonagaon	Infrastructure	Sonagaon village, Chandrapur, Maharashtra	6.43	Direct Expenditure	6.42492	Direct
34	Provision of Dustbin in schools under "Swachh Bharat Abhiyan"	Infrastructure	Maharashtra	0.34	Direct Expenditure	0.336	Direct
35	Construction of RCC stage and kitchen shed at Nandori	Infrastructure	Nandori village, Chandrapur, Maharashtra	5.41	Direct Expenditure	4.97875	Direct
36	Construction of Toilets in Zilla Parishad School at Nari, Nagpur	Infrastructure	Nari village, Nagpur, Maharashtra	3	Direct Expenditure	2.78445	Direct
37	Toilets in Zilla Parishad School, Wagholi, Nagpur	Infrastructure	Wagholi village, Nagpur, Maharashtra	5	Direct Expenditure	3.75	Direct
38	Toilets in Zilla Parishad School, Rajura, Chandrapur	Infrastructure	Rajura village, Chandrapur, Maharashtra	5	Direct Expenditure	2.75	Direct
39	R.C.C Road at Hirapur	Infrastructure	Hirapur village,	Spill-over activity	Direct Expenditure	3.53762	Direct



CSR Budget & Expenditure for the year 2014-15							
1	2	3	4	5	6	7	8
			Chandrapur, Maharashtra				
40	Construction of 2 class-rooms & Laboratory rooms for school building at Deorikhurd (Spill-over Activities)	Infrastructure	Deorikhurd village, Bilaspur, Chhattisgarh	5.7	Direct Expenditure	7.72462	Direct
41	Construction of 4 nos. of Toilets at different schools (with water facilities) near command areas of RI-V, Bilaspur	Infrastructure	Bilaspur, Chhattisgarh	27	Direct Expenditure	Nil (Spilled over to 2015-16)	Direct
42	Provision of Dustbin in schools under "Swachh Bharat Abhiyan"					0.068	Direct
43	Balance payment for construction of classroom at Khamtarai village (Spill-over activities for the year 2013-14)	Infrastructure	Khamtarai village, Bilaspur, Chhattisgarh	Spill-over activity	Direct Expenditure	0.12024	Direct
44	Balance payment for construction of Bathing ghat at Khamtarai village (Spill-over activities for the year 2013-14)	Infrastructure	Khamtarai village, Bilaspur, Chhattisgarh	Spill-over activity	Direct Expenditure	0.07203	Direct
45	Balance payment for construction of Muktidham Shed, khamtarai village (Spill-over activities for the year 2013-14)	Infrastructure	Khamtarai village, Bilaspur, Chhattisgarh	Spill-over activity	Direct Expenditure	0.05479	Direct
46	Fabrication and Supply of 165 nos. of three seater wooden benches & desks for supply in different government schools.	Education	Singrauli, Madhya Pradesh	11	Direct Expenditure	7.425	Direct
47	Supply of 70 nos. of three seater wooden desk -benches, 07 nos. of wooden tables & 17 nos. of	Education	Singrauli, Madhya Pradesh	2.5	Direct Expenditure	5.7629	Direct

CSR Budget & Expenditure for the year 2014-15							
1	2	3	4	5	6	7	8
	wooden chairs, 12 nos. of steel almirah etc. for use by the school staff/school teachers of govt. school						
48	Provision of Dustbin in schools under "Swachh Bharat Abhiyan" - 10 nos.	Education	Singrauli, Madhya Pradesh		Direct Expenditure		Direct
49	Less:Excess Provision for CSR activities for the F.Y. 2013-14 Reversed		Madhya Pradesh	Spill-over activity	Direct Expenditure	-0.52935	Direct
50	Construction of Community hall at Brahmanibil village, Chhendipada.	Infrastructure	Brahmanibil village, Anugul, Odisha	8.27	Direct Expenditure	8.01775	Direct
51	Drilling & Installation of 3 nos. of Borewell at Kosala, Kaitha Dhipa & Barpada Villages near Kosala Camp	Drinking water	Kosala, Kaitha Dhipa & Barpada Villages, Anugul, Odisha	3	Direct Expenditure	2.32118	Direct
52	Construction of Kalyan Mandap at Kosala village	Infrastructure	Kosala Village, Anugul, Odisha	27	Direct Expenditure	7.36477	Direct
	<b>Grand Total</b>			<b>194.77</b>		<b>168.38664</b>	

## Sustainability Expenditure for the Year 2014-15

Sustainability Budget & Expenditure for the year 2014-15							
1	2	3	4	5	6	7	8
S. No.	CSR Project or activity identified	Sector in which the project is covered	Projects or Programs 1) Local Area or other 2) Specify the state district where projects or programs was undertaken	Amount outlay (Budget) Project or program wise	Amount spent on the projects or programs Sub-Heads: 1) Direct expenditure on projects or programs 2) Overheads	Cumulative expenditure upto to the reporting period	Amount spent: Direct or through implementing agency
1	Installation of Waste Paper Recycling System at CMPDI(HQ)	Sustainability	Ranchi, Jharkhand	2.97	Direct Expenditure	2.96504	Direct
2	SD Activity "Energy Conservation"	Sustainability	Bilaspur, Chhattisgarh	10	Direct Expenditure	6.01425	Direct
3	Rain water Harvesting in CMPDI RI-VI Colony Jayant	Sustainability	Singrauli, Madhya Pradesh	3.25	Direct Expenditure	3.55191	Direct
	<b>Total</b>			<b>16.22</b>		<b>12.5312</b>	

A responsibility statement of the CSR committee that the implementation and monitoring of CSR Policy, is in compliance with CSR objectives and policies of the company.

		Not Applicable
(Sri Amal Kumar Debnath) Chairman-cum-Managing Director, CMPDIL	(Sri Rakesh Kumar Mittal) Chairman CSR Committee, CMPDIL	(Persons specified under clause (d) of sub-section (1) of section 380 of the act.)  (wherever applicable)

\*\*\*