

# Corporate Social Responsibility

## Annual Report

### 2019-20

*This report intends to communicate the corporate social responsibility activities carried out by CMPDI to its stake holders in a transparent and inclusive manner and share its vision in this direction.*

**Central Mine Planning & Design Institute Limited**

(A Subsidiary of Coal India Limited / a Public Sector Undertaking of the Government of India Under the Ministry of Coal)

Gondwana Place, Kanke Road, Ranchi - 834 031, Jharkhand, India

## CONTENTS



**cmpdi**  
A Mini Ratna Company

| Subjects  | Page No. |
|---|----------|
| Chairman's Message                                  | 01       |
| Chapter I   | 02       |
| Introduction  | 03       |
| CSR in CMPDIL                                       | 04       |
| CMPDIL at a glance                                  | 05 - 06  |
| Board of Directors                                  | 07       |
| Chapter II  | 09       |
| CSR Policy  | 10 - 16  |
| Chapter III   | 17       |
| Few Major Areas of CSR Projects/Activities          | 18       |
| Last 5 years CSR budget and Expenditure             | 19       |
| Head wise expenditure on CSR                        | 20-21    |
| Chapter IV  | 22       |
| CSR Activities F.Y. 2019-20                         | 22       |
| Education   | 23 - 24  |
| Infrastructure                                      | 24       |
| Healthcare  | 25-26    |
| Skill Development                                   | 27       |
| Sustainable Development:                            | 28       |
| Swachhata Action Plan (SAP)                         | 28-29    |
| Sanitation & Drinking Water Facility                | 30       |
| Chapter V   | 31       |
| Composition of the CSR Committee                    | 32       |
| Average PBT of the company for the last three years | 33       |
| CSR Expenditure for the FY-2019-20                  | 34-45    |

## Chairman's Message



Dear All,

It gives me immense pleasure to learn that CMPDI is publishing its Annual Report for the financial year 2019-20 on Corporate Social Responsibility (CSR).

Corporate Social Responsibility is widely recognized as an important means to promote sustainable development and inclusive growth. Corporates are now judged by the stakeholders and the society at large by the initiatives taken to address sustainable issues. Societal well-being is a pre-requisite for any business to grow and prosper.

Corporate has a broader responsibility to ensure that all segments within the society grow and develop in an equitable manner. CSR is therefore a commitment of corporates to operate in an economically, socially, environmentally sustainable manner while recognizing the interest of all its stakeholders.

In CMPDIL, it has been our endeavor to be responsible corporate citizen and be committed to work for the betterment of the society and communities that exist around us. The relationship between our business and community helps us to grow. CMPDI CSR Cell has brought out this Annual Report on CSR initiatives undertaken in last financial year (2019-20) so that the stakeholders & employees of the company comprehend with CSR practices of CMPDIL.

This report will definitely serve as a useful reference document for all our stakeholders. In the financial year 2019-20, we implemented the projects worth Rs. 307.28 lakhs. To conclude, I would like to thank our stakeholders for their support and assure them that we are ever willing to improve and are committed towards building a sustainable community in the interest of the nation

Warm Regards,

**(Shekhar Saran )**  
**Chairman-cum-Managing Director**



**cmpdi**  
*A Mittal Ratna Company*

# Chapter - I

- Introduction
- CSR in CMPDIL
- Company Profile
- Organizational Chart of CMPDIL



## INTRODUCTION



Corporate Social Responsibility is a management concept whereby companies integrate social and environmental concerns in their business operations and interactions with their stakeholders. CSR is generally understood as being the way through which a company achieves a balance of economic, environmental and social imperatives, while at the same time addressing the expectations of shareholders and stakeholders.

CSR is a multilayered concept having four main aspects namely

- (1) Economic responsibility required by society
- (2) Legal responsibilities being desired by society
- (3) Ethical responsibilities as expected by society and
- (4) Philanthropic responsibilities being desired by society.

True CSR requires satisfaction of all four levels consecutively.

“Companies with an eye on their triple bottom line-economic, environmental and social sustainability – outperform their less fastidious peers on the stock market”. CSR ensures advantages to the company, boosts its brand value and avoids activists taking on directors in AGM on unethical practices. Employees feel happy to work in an ethical firm. It builds trust among shareholders, employees, customers and society.

Here is a brief overview of commonly accepted benefits of having a sound CSR policy which inspire us to actively take up CSR activities:

- ❖ Serving all the company's stakeholders is accepted as the best way to produce long term success and to create a growing, prosperous company.
- ❖ The company's intervention and technologies are directed to contribute to the benefits and welfare of the people.
- ❖ The company creates win-win relationship with their stakeholders.
- ❖ The company grows hand-in-hand with their employees supporting them to reach their full potential and improve their standard of living.
- ❖ Company prosperity is directly linked to the prosperity of customers, suppliers and shareholders.
- ❖ CSR helps to create positive image of the company through its activities.

At CMPDI, we view CSR as a way of conducting business, which enables us to distribute "growth" within our stakeholders in a better manner. The implementation and integration of ethical systems and sustainable management practices also form a key component of our CSR policy. At CMPDI, we do not believe CSR to be emanating directly from external demands; instead we see it as a process by which our managers evolve our relationship with our stakeholders for the common good and we demonstrate our commitment in this regard by adoption of appropriate business processes and strategies in and around of our drilling camps and offices spread all over the country. We have already emphasized that CSR and sustainable development are two sides of the same coin and so we believe in the philosophy that economic and industrial development must go on in such a way that no irreparable damage be done to the environment.

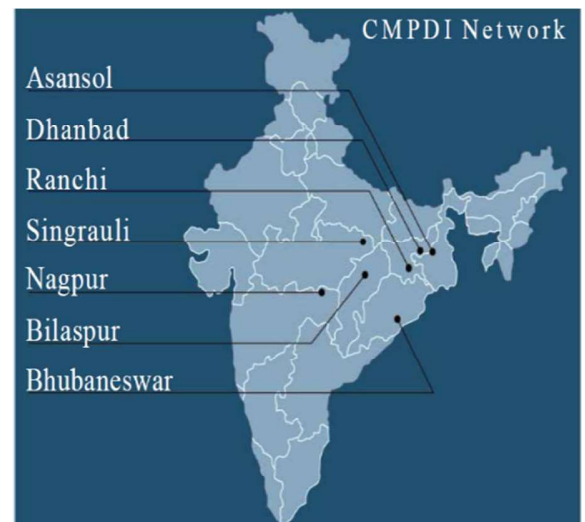
CMPDI was established in the year 1975 as a subsidiary of Coal India Limited (a Government of India Public Sector Undertaking). CMPDI operates through its headquarters at Ranchi and seven Regional Institutes designated as RI-I to RI-VII located at Asansol, Dhanbad, Ranchi, Nagpur, Bilaspur, Singrauli and Bhubaneswar respectively. Seven Regional Institutes render consultancy services to seven corresponding subsidiaries of CIL viz. ECL (RI-I), BCCL (RI-II), CCL (RI-III), WCL (RI-IV), SECL (RI-V), NCL (RI-VI), & MCL (RI-VII). Consultancy services to CIL (HQ), NEC & non-CIL clients are provided mainly through CMPDI (HQ). CMPDI also handles specialized assignments of Ministry of Coal and CIL. CMPDI provides consultancy services as also turnkey execution of projects to various organizations in India and abroad.

## CMPDI at a glance



CMPDIL (Central Mine Planning & Design Institute Limited), an ISO-9001 company, holds the pre-eminent position as the India's largest consultancy organization and the market leader in an expanding earth resource sector. In June, 2019 CMPDI got the status of Mini Ratna (Category – I). A key factor in this success has been the offering of full-range of services in the sphere of resource exploration & development in:

- Exploration
- Mining
- Coal Preparation
- Coal Utilization and Management
- Coal Technology
- Coal / Material Handling Arrangement
- Engineering, and
- Environmental Management.



## MISSION of CMPDIL

The Mission of CMPDI is to provide total consultancy in Coal and mineral exploration, mining, engineering and allied fields as premier consultants in India and a leading one in the International arena.

## VISION of CMPDIL

The Vision of CMPDI is to be the market leader in an expanding earth resource sector and allied professional activities.

## MANAGEMENT POLICY OF CMPDIL

With a mission of exploration of coal and other mineral resources and providing consultancy in mine planning, design, associated engineering and management systems, CMPDIL, as a premier consultant, strives to be the market leader in the expanding earth resource sector and other professional activities.

We are committed to:

1. Continually improve the quality of our consultancy and other support services with due consideration of the environment, information security and energy performance;
2. Protect the environment by minimizing the adverse impact of our activities on it by consistently reducing, reusing and recycling a part of the waste generated;
3. Provide the resources for achieving the objectives and targets of the quality, environment, energy and information security management systems;
4. Protect our information assets from threats and interruptions to maintain business continuity and continually improve information security performance;
5. Comply with the legal and all other applicable requirements.

## Board Of Directors as On 31.03.2020

### Executive Directors



**Sri Shekhar Saran**  
Chairman-cum-Managing Director



**Sri K.K. Mishra**  
Director (T/ES)



**Sri Rabindra Nath Jha**  
Director (T/RD&T)



**Sri Anil Kumar Rana**  
Director (T/P&D)



**Sri S. K. Gomasta**  
Director (T/CRD)

### Part-Time Official Directors



**Sri Binay Dayal**  
Director (Technical), Coal India Ltd.



**Dr. Anindya Sinha**  
Project Adviser, Ministry of Coal, GoI

### Independent Directors



**Dr. Krishna Chandra Pandey**  
Independent Director



**Smt. Alka Panda**  
Independent Director



**Sri Pramod Singh Chauhan**  
Independent Director

### Permanent Invitee & Company Secretary

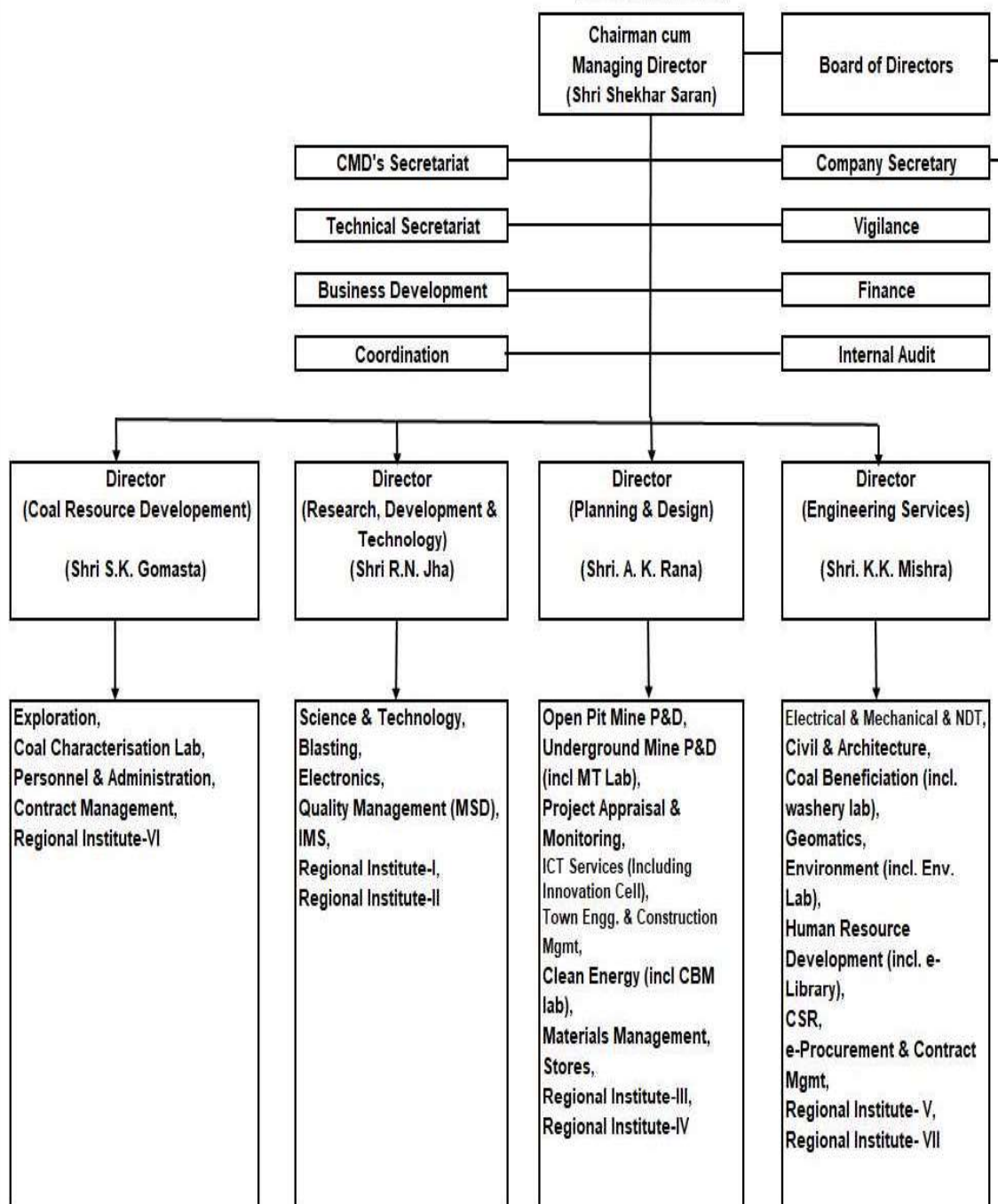


**Sri Ajitesh Kumar**  
Dy. Secretary, Ministry of Coal, GoI



**Sri Abhishek Mundhra**  
Company Secretary

**ORGANISATION STRUCTURE OF  
CMPDI**  
(As on 31.03.2020)





# Chapter – II



## ○ CSR Policy

## CSR POLICY

### **Corporate Social Responsibility (CSR) Policy of CMPDIL**

#### **I. PREAMBLE**

The concept of Corporate Social Responsibility has gained prominence from all avenues. Organizations have realized that Govt. alone will not be able to get success in its endeavour to uplift the downtrodden of Society. With the rapidly changing corporate environment, more functional autonomy, operational freedom etc. CMPDIL has adopted CSR as a strategic tool for sustainable growth. For CMPDIL in the present context, CSR means not only investment of funds for Social Activity but also Integration of Business processes with Social processes.

#### **II. INTRODUCTION**

The drilling camps of CMPDIL and its Regional Institutes are located in different parts of the country spread in 8 States and relatively in isolated areas with little contact to the outside society. The primary beneficiaries of CMPDIL CSR would be those staying in the local area and areas around where CMPDIL is operating its works.

In the aforesaid backdrop, policy on Corporate Social Responsibility of CMPDIL has been framed after incorporating the features of the Companies Act 2013 and as per notifications issued by Ministry of Corporate Affairs, Govt. of India from time to time as well as DPEs guidelines and broadly covers the following: -

- A) Welfare measures for the community at large, so as to ensure the poorer section of the Society derived the maximum benefits.
- B) Contribution to the society at large by way of social and cultural development, imparting education, training and social awareness especially with regard to the economically backward class for their development and generation of income to avoid any liability of employment.



C) Protection and safeguard of environment and maintaining ecological balance.

### **III. OBJECTIVE**

The main objective of CMPDIL CSR policy is to lay down guidelines for CMPDIL to make CSR a key business process for sustainable development of the Society integrated with our business policy. It aims at supplementing the role of the Govt. in enhancing welfare measures of the society based on the immediate and long term social and environmental consequences of their activities. CMPDIL will act as a good Corporate Citizen working towards up-liftment of society and social equity.

### **IV. AREAS TO BE COVERED**

For carrying out CSR activities, preference will be given to the local area and areas around the CMPDIL Project Site/Drilling Camp/Regional Institute/ HQ.

### **V. ALLOCATION OF FUND**

The fund for the CSR should be allocated based on minimum 2% of the average net profit of the Company for the three immediate preceding financial years or as per the Amendments in Companies Act, 2013.

### **VI. SCOPE**

The scope of CSR activities shall be in 'Areas' or 'Subjects' as specified in Schedule-VII are:

- i) Promoting Healthcare and Sanitation: Eradicating hunger, poverty and malnutrition, promoting preventive health care and sanitation and making available safe drinking water. Promoting facilities and care for communicable, stigma and discrimination based diseases such as AIDS, leprosy, TB, etc.

- ii) Promoting education: Promoting inclusive education including special education and employment enhancing vocation skills especially among children, women, elderly and differently abled and livelihood enhancement projects.
- iii) Reducing Inequality: Promoting gender equality, empowering women, setting up homes, hostels, day care centres and other facilities for women, orphans, senior citizens, Disabled and measures for reducing inequalities faced by socially and economically backward groups.
- iv) Sustainable environment: Ensuring environmental sustainability, ecological balance, protection of flora and fauna, animal welfare, agro-forestry, conservation of natural resources, maintaining quality of soil, air and water, support a precautionary approach to environment challenges, undertake initiatives to promote greater environmental responsibility and encourage the development and diffusion of environmentally friendly technologies.
- v) Protection & Promotion of national heritage and traditional arts: Protection of national heritage, art and culture including restoration of buildings and sites of historical importance and works of art: setting up public libraries, promotion and development of traditional arts and handicrafts.
- vi) Measures for the benefit of armed forces veterans, war widows and their dependents.
- vii) Promotion of Sports: Training, promotion and development of rural sports, nationally recognized sports, Paralympic sports and Olympic sports for children, youths, disabled & tribal.
- viii) Contributions to Funds and emergency needs: Contribution to the Prime Ministers National Relief Fund or any other fund set up by the central government for socio-economic development and relief and

welfare of scheduled castes, the scheduled tribes, other backward classes, minorities and women.

- ix) Contribution or funds provided to technology incubators located within academic institution which are approved by Central Government.
- x) Rural development projects.
- xi) Slum Development projects.

## **VII. IMPLEMENTATION**

- a) The investment of CSR should be project/activity based and for every project time framed periodic mile stones should be finalized at the outset.
- b) Project /activities identified under CSR are to be implemented directly (internal resources) or by specialized agencies. Specialized agencies could be made to work singly or in tandem with other agencies. Specialized agencies would include:
  - I. Community based organization whether formal or informal.
  - II. Elected local bodies such as Panchayats.
  - III. Voluntary Agencies (NGOs).
  - IV. Institutes/ Academic Organizations.
  - V. Trusts, Mission etc.
  - VI. Self-help groups.
  - VII. Government, Semi-Government and Autonomous Organizations.
  - VIII. Standing Conference of Public Enterprises (SCOPE)
  - IX. Mahila Mandals/Samitis and the like.
  - X. Contracted agencies for civil works.
  - XI. Professional Consultancy Organization etc.

## VIII. INSTITUTIONAL ARRANGEMENT

1. **CSR Committees and their Roles:** Three levels of CSR committees would be functional in CMPDIL namely:

- i. **CSR Board Level Committee:** The CSR Board Level Committee will consist of three or more Directors out of which at least one Director shall be Independent Director.

The projects/activities proposed by CSR Apex Committee will be put up before CSR Board Level Committee for recommendation of the proposals along with the proposed financial expenditure for approval of CMPDIL Board.

The CSR Board Level committee will be appraised of the progress of CSR projects/activities from time to time.

The CSR Board Level committee shall recommend the amount of proposed expenditure to be incurred in case of fresh proposals for CSR activities.

- ii. **CSR Apex Committee** at HQ level: It will comprise of HoDs of HRD, TE&CM, Finance, Environment and Exploration or their representatives' along with other invitees and will be headed by Nodal Officer, CSR, HQ.

The Apex Committee will decide the priority of the activities to be undertaken in CSR for placing before the CSR Board Level Committee. The Apex Committee will review the progress of projects/activities undertaken/completed from time to time and report the same to the competent authority.

- iii. **CSR Sub Committee** at each Regional Institute shall comprise of HoDs of P&A, Civil, Finance, Environment and Exploration or their representatives and other invitees and will be headed by Regional Director.

The CSR Sub Committee shall initially screen the project proposals received and send the selected proposals to CSR Apex Committee at HQ level.

**2. The CSR Apex committee at HQ and CSR Sub Committee at RIs will be responsible for identification and implementation of projects/activities which involve the following: -**

- The Committee will interact with different nearby villagers, communities, local Authorities/Local Bodies, organizations to identify the community development needs of the peripheral areas to and recommend the projects/activities which are to be taken under CSR.
- In case where there are chances of duplicity of projects/activities; the above mentioned Committees will also interact with the concerned State Officials/Govt. officials to confirm the areas for undertaking projects/activities under CSR activities to avoid duplicity of the job.

The CSR cell, HQ should be headed by Senior Executive as Nodal Officer. The finalized CSR action plan along with budget requirement of all the Regional Institutes should be sent to CSR Cell, HQ. The consolidated CSR plans of the Regional Institutes & HQ

should be placed before the CSR Apex Committee. All the proposals received/ plans chalked out will then be scrutinized by the CSR Apex Committee.

The recommendations would further be submitted before the CSR Board Level Committee for recommendation before approval from the CMPDIL Board.

**3. Delegation of Power (DOP) for according approval of any CSR project proposal:**

- a) In case CSR budget of any Regional Institutes is exhausted, the Regional Director may refer the particular CSR activity/ project/programme to CMPDIL HQ which are considered to be emergent/important by the concerned Regional Director; further to be put up before CSR Board Level

Committee.

- b) In case any new CSR project/activity is proposed other than CSR projects/activities approved by the CMPDIL Board for the FY up to 25 lakhs, such projects/activities may be approved by the CMD on the recommendation of CSR Board Level Committee. For the proposals of more than Rs. 25.00 Lakhs, approval of the CMPDIL Board will be required on the recommendation of CSR Board Level Committee.

#### **IX. BASE LINE SURVEY & DOCUMENTATION**

- a) Keeping in view the DPEs guidelines baseline survey is not insisted upon in every case and flexibility would be granted to opt other methods including use of in house expertise and resources for need assessment studies.
- b) Meticulous documentation relating to CSR approaches, policies, programmes, expenditures should be prepared and put in the Public Domain.

#### **X. MONITORING**

- a) The Nodal Officer- CSR at HQ and RIs will be responsible for reporting on CSR and preparing the Annual Report on CSR projects/activities.
- b) Monitoring and Impact Assessment Committee comprising of the executives of Community Development cadre and other disciplines will carry out the Monitoring and Impact Assessment studies of the CSR projects/activities of CMPDIL from time to time. This committee will report to the Nodal Officer, CSR cell.

#### **XI. CONCLUSION**

The above guidelines would form the framework around which the CSR activities would be undertaken by CMPDIL HQ and all its Regional Institutes. Any amendments in the Company's Act 2013 pertaining to CSR along with DPEs guidelines from time to time will be adhered to.

# Chapter - III

- Few Major Areas of CSR
- Last 5 years CSR budget and Expenditure
- Head wise expenditure on CSR



## Few Major Areas of CSR

SKILL DEVELOPMENT

EDUCATION

INFRASTRUCTURAL DEVELOPMENT

HEALTHCARE





## LAST 5 Financial Years CSR Budget & Expenditure

**The budget allocated & expenditure for CSR activities during the last five financial years in respect of CMPDIL is as under:**

For the financial year 2019-20, as per the section 135 of the Companies Act, 2013, the mandatory CSR expenditure to be incurred was Rs. 300.01 lakhs. However, looking at the expanse of presence of CMPDIL; Rs. 376.55 lakhs were allocated by the CMPDIL Board. The expenditure made thereof in the FY 2019-20 was Rs. 307.287 lakhs.

| Financial Year | Budget provision for CSR as per Companies Act 2013 | Amount Allocated as per 2% rule<br>(Rs. In lakhs) | Actual Amount Allocated for CSR activities<br>(Rs. In lakhs). | Amount Actually spent for CSR activities<br>(Rs. In lakhs) |
|----------------|--|---|---|--|
| 2015-16        | 2% of average net profits of last three years.     | 69.14   | 200 .00   | 200.73   |
| 2016-17        |  | 77.64   | 120 .00   | 102.05   |
| 2017-18        |  | 98.27   | 150 .00   | 137.40   |
| 2018-19        |  | 152.59  | 152.70  | 157.88   |
| 2019-20        |  | 300.01  | 376.55  | 307.287  |

## CSR BUDGET & EXPENDITURE

For the financial year 2019-20, as per the section 135 of the Companies Act, 2013, the mandatory CSR expenditure to be incurred was Rs. 300.01 lakhs. However, looking at the expanse of presence of CMPDIL; Rs. 376.55 lakhs were allocated by the CMPDIL Board. The expenditure made thereof in the FY 2019-20 was Rs. 307.287 lakhs.

| Sl. No. | UNIT                | Expenditure (Rs. in Lakhs) |
|---------|---------------------|----------------------------|
| 1       | HQ, Ranchi          | 54.88                      |
| 2       | RI-I, Asansol       | 28.45                      |
| 3       | RI-II, Dhanbad      | 13.43                      |
| 4       | RI-III, Ranchi      | 45.73                      |
| 5       | RI-IV, Nagpur       | 52.23                      |
| 6       | RI-V, Bilaspur      | 34.43                      |
| 7       | RI-VI, Singrauli    | 12.54                      |
| 8       | RI-VII, Bhubaneswar | 65.60                      |
|         | <b>TOTAL</b>        | <b>307.287</b>             |

### Thematic Area Wise Expenditure CSR from FY 15-16 till FY 19-20

| Sl. No.      | Areas                                | 2015-16<br>(Rs. In Lakhs) | 2016-17<br>(Rs. in Lakhs) | 2017-18<br>(Rs. in lakhs) | 2018-19<br>(Rs. in lakhs) | 2019-20<br>(Rs. in lakhs) |
|--------------|--------------------------------------|---------------------------|---------------------------|---------------------------|---------------------------|---------------------------|
| 1            | Education                            | 36.78                     | 31.65                     | 71.24                     | 50.53                     | 156.08                    |
| 2            | Infrastructure                       | 143.04                    | 41.46                     | 19.12                     | 17.56                     | 31.33                     |
| 3            | Water Supply                         | 3.39                      | 6.00                      | 2.30                      | 7.96                      | 32.05                     |
| 4            | Health                               | 10.00                     | 10.00                     | 4.00                      | 14.69                     | 42.73                     |
| 5            | Women Empowerment/ Skill Development | 2.08                      | 3.19                      | 15.73                     | 7.23                      | 23.78                     |
| 6            | Social Development                   | 2.97                      | 0.32                      | 11.26                     | 4.76                      | 0.00                      |
| 7            | Sustainability                       | 1.15                      | 6.34                      | 1.35                      | 3.04                      | 6.45                      |
| 8            | Sanitation and others                | 1.32                      | 3.07                      | 12.41                     | 52.10                     | 14.86                     |
| <b>Total</b> |                                      | <b>200.73</b>             | <b>102.05</b>             | <b>137.40</b>             | <b>157.88</b>             | <b>307.287</b>            |

### State Wise Expenditure incurred on CSR from FY 15-16 till FY 19-20

| Sl. No.      | State covered  | Expenditure for FY 15-16<br>(Rs. in lakhs) | Expenditure for FY 16-17<br>(Rs. in lakhs) | Expenditure for FY 17-18<br>(Rs. in lakhs) | Expenditure for FY 18-19<br>(Rs. in lakhs) | Expenditure for FY 19-20<br>(Rs. in lakhs) |
|--------------|----------------|--|--|--|--|--|
| 1.           | Jharkhand      | 69.600                                     | 52.169                                     | 63.776                                     | 51.53                                      | 107.93                                     |
| 2.           | West Bengal    | 23.74                                      | 6.204                                      | 10.998                                     | 8.03                                       | 34.56                                      |
| 3.           | Maharashtra    | 27.01                                      | 15.688                                     | 18.949                                     | 2.62                                       | 52.23                                      |
| 4.           | Chhattisgarh   | 44.18                                      | 17.936                                     | 14.990                                     | 17.29                                      | 34.43                                      |
| 5.           | Madhya Pradesh | 12.39                                      | 7.017                                      | 7.971                                      | 18.00                                      | 12.54                                      |
| 6.           | Odisha         | 23.79                                      | 3.033                                      | 20.72                                      | 15.43                                      | 65.60                                      |
| 7.           | All over India | -  | -  | -  | 44.97                                      | 0  |
| <b>Total</b> |                | <b>200.73</b>                              | <b>102.05</b>                              | <b>137.40</b>                              | <b>157.88</b>                              | <b>307.287</b>                             |



## Chapter - IV

### CSR Activities F.Y. 2019-20

- Education
- Infrastructural Development
- Healthcare
- Skill Development
- Sustainable Development:
- Swachhata Action Plan (SAP)
- Sanitation & Drinking water

## CSR Projects/Activities undertaken by CMPDIL in F.Y. 2019-20:

### Education:

Educational support like scholarship to meritorious students, sponsorship to girl students from poor families in the form of school fees, stationaries, uniforms for promoting “*BetiPadhao*, *BetiBachao*” abhiyan of Hon’ble Prime Minister of India. Financial Assistance is also provided for celebration of Annual day, Sports Day,



Independence Day & Republic Day in different Schools of Ranchi, Jharkhand, Sponsorship to Physically/ Mentally Challenged & Blind Students from Asansol Anandam & Asansol Braille Academy, Asansol, West Bengal. Programs were organized for educational

development through sports of students of two Govt. schools in Ranchi district, Jharkhand.





Sponsorship has been provided to 72 destitute/orphans/backward group of students from slum areas which includes school fees, uniforms, school stationary, books & copies of Deo Anna Vivekanand Parmeshwar Public School, Sembo, Ranchi. Construction of classroom with provision of electrical appliances for Bapuji Govt. UP School, Godakana, Bhubaneswar has been carried out by RI VII, Bhubaneswar.



*Distribution of School uniforms & Stationary among destitute/orphans*

Construction of external walls joining different units of school building with gate & renovation/repairing of existing toilets of Rajkiya Utkramik Madhya Vidhyalaya, Murgaon, Dadhu Panchayat, Latehar, Jharkhand. Providing and fixing tubewell with Submersible Pump and PVC Water Tank Including Pipe Fitting Two Govt. School in Singrauli, M.P.

**Infrastructural development in Rural areas:** Three Kalyan Mandap for villagers congregation at Bada Chandgudia village, Santarabandh village and Kakudia village near Kosala camp, Orissa



have been constructed. Construction of village road at Bandra village, Kendra-Yensa, Panchayat Samiti-Warora, Dist.- Chandrapur, Maharashtra has also been done.

*Construction of village road at Bandra village, Kendra-Yensa, Panchayat Samiti-Warora, Dist.- Chandrapur, Maharashtra*

## Healthcare:

Assistance in the form of financial aid for hospitalization and other medical assistance such as consultation, treatment, medicines, pathological tests, physiotherapy and food for fifteen (15 no.) leprosy patients from Jharkhand and West Bengal through Pyari Foundation – India Trust, Balarampur,



Purulia has been provided. Room with provision of fixture and furniture for Heat Stress patients has been constructed at Kosala Community Health Centre, village- Kosala, GP- Kosala, Block-Chhendipada, Odisha.



Periodic medical camps have been organized in remote villages of some of the backward districts of Jharkhand, Madhya Pradesh, Maharashtra, Chhattisgarh and Odisha throughout the FY 2019-20.



*Medical Camp by CMPDIL at HQ & RIs*





CMPDIL is providing financial assistance from last three years for hospitalization cost of deprived leprosy patients at Gandhi memorial Leprosy Hospital, Balarampur, Purulia, West Bengal run by Pyari Foundation – India Trust.

Gandhi Memorial Leprosy Foundation (GMLF) Hospital, a Leprosy Hospital, Balarampur, Purulia, West Bengal. GMLF Balarampur leprosy control unit was established in 1977 comprising 341 high leprosy prevalent villages in Purulia district and adjacent areas of Jharkhand with a regular Out Patient Department (OPD).

The hospital is equipped with a Laboratory, Physiotherapy Section and an Operation Theatre.

The Pyari Foundation-India Trust has been established to primarily serve the cause of Loving Daughters, Loving Sisters and Loving Mothers of the Country. It is Registered as a Public Charitable Trust on 10th July' 2007 with the aim to redress the Socio-economic, Socio-Medical problems relating to Disability, Mainstreaming of Street children/Orphans, Women in Distress, to extend Geriatric care, to serve Leprosy, TB & HIV/AIDS

affected with priority to Women and Children in the Country.

PFIT has taken over and running the premier Leprosy Institute, Gandhi Memorial Leprosy Foundation Project, Balarampur, Purulia (WB).

This initiative of CMPDIL is ensuring their income generation and make them financially self-reliant resulting into greater social acceptance.



### Skill Development:

Assistance has been provided to Prayas JAC Jharkhand for Skill development training in Retail Marketing along with life skills to 120 youths from areas of Dhurwa, Dibdih, Balalong, Sithio, etc. from Ranchi district. Along with this Skill development for generation of employment through capacity building of



underprivileged women through training program for 2nd batch of sewing and design course for 15 number of underprivileged women was also arranged.

Financial aid was also provided y CMPDIL RI- I, Asansol to Sewa Sangha, Kolkata for training in computers- software to 90 number of unskilled and unemployed youths & Multi-skilled training in Assistant Electrician to 40 number of unskilled and unemployed youths of Asansol, West Bengal.



*Skill Development Training Session for of unskilled and unemployed youths of Asansol, West Bengal*

### **Sustainable Development:**

Installation of 5 KW solar Plant at Zila Parishad Prathmik Shala, Bandra village, Kendra-Yensa, Panchayat Samiti-Warora, Dist-Chandrapur, Maharashtra by RI- IV, Nagpur has been done. This has ensured supply of electricity in the school brightening the lives of the students.



### **Swachta Action Plan:**



October 2019 was also organized along with regular cleanliness programs; massive tree plantation including fruit bearing trees was carried out by HQ and

CMPDIL celebrated Swachhata Pakhwada from 16th June to 30th June 2019 and 16th August 2019 to 31st August 2019. In addition to Swachhata Pakhwada “Swachhata hi Sewa” campaign was organized from 11<sup>th</sup> September 2019 to 27<sup>th</sup>





all seven RIs under Swachhata Action Plan(SAP). Cleanliness drive was carried out not only in the office premises of all drilling camps of the seven Regional Institutes and at Headquarter but also at different schools, villages to inculcate the habit of keeping self and surroundings clean. Swachhata Oath was taken at mass level by students, villagers, officials, staff and residents. Drawing competitions, door to door campaign, wall paintings, Swachhata rallies were also organized.



*Various activities taken up under SAP F.Y. 2019-20*

### **Sanitation and Drinking Water facility:**

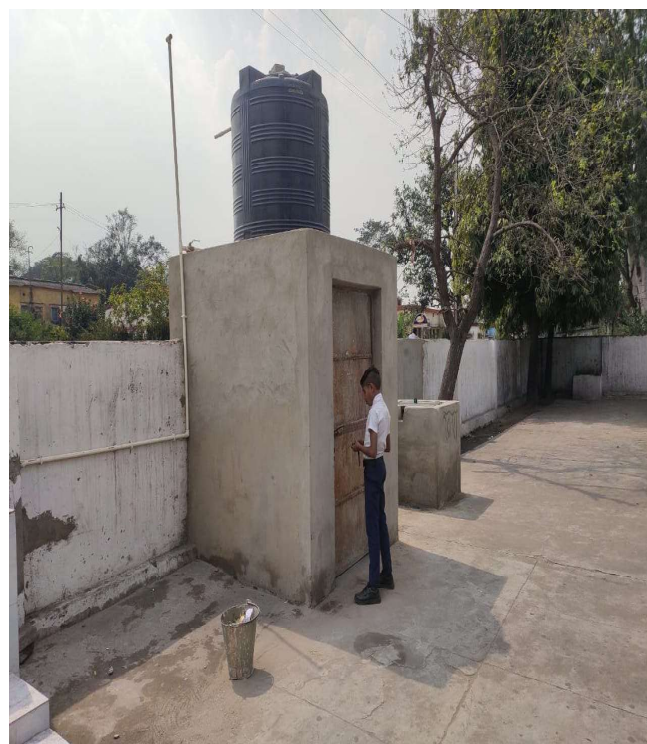
36 no. of hand pumps with drainage & platform have been constructed at different locations in Jharkhand. Digging of bore well and providing drinking water pipeline connection at Lamdand village, Kudumkela Camp was done.



1 HP submersible pump and OH PVC (1000+) water tank including pipe fitting at Shashkiya Poorva and Water Purifier cum cooler(Heavy duty) at Shashkiya High School, Nawanagar, Waidhan, Singrauli, MP has been provided.

Constructed toilet block with water supply arrangement at OSAP Govt. High School, Near CMPDIL Colony and toilet block with water supply arrangement for slum dwellers Near CMPDIL Colony.

CMPDIL provided Tube well with Submersible Pump and PVC Water Tank Including Pipe Fitting at Govt School:



Distribution of masks & hand sanitizers in view of COVID-19"-4000 face masks &1000 ltr of hand sanitizer was distributed in the month of March 2020" amounting to Rs. 2.64 lakhs.

# Chapter - V

- Composition of the CSR Committee
- Annual Profits & CSR Budget
- CSR Expenditure F.Y. 2019-20



### COMPOSITION OF THE CSR COMMITTEE

A Board Level Committee headed by an Independent Director has been constituted to allocate budget, review the progress and provide guidance on various CSR & Sustainability initiatives. The Composition of ‘Committee of Directors on CSR’ as on 31st March, 2020 as under-

| CSR Board Level Committee member's name | CSR Committee | Designation          |
|---|---------------|----------------------|
| Shri Pramod Singh Chauhan               | Chairman      | Independent Director |
| Shri Krishna Chandra Pandey             | Member        | Independent Director |
| Smt. Alka Panda                         | Member        | Independent Director |
| Shri K.K. Mishra                        | Member        | Director (T/ES)      |
| Shri R.N. Jha                           | Member        | Director (T/RD&T)    |

### Average net profit of the company for the last three years

The annual Profits during last three years in respect of CMPDI is as under:

| Financial Year                           | PBT (Rs. In crores) |
|--|---------------------|
| 2016-17                                  | 65.53               |
| 2017-18                                  | 120.82              |
| 2018-19                                  | 263.82              |
| Average PBT of last tree Financial Years | 150.06              |

| Financial Year | PBT of the last three years (Rs. In crores) | Average PBT of last three financial years (Rs. In crores) | 2% of PBT (Rs. In lakhs) |
|----------------|---|---|--------------------------|
| 2016-17        | 65.53                                       | 150.06  | 300.01                   |
| 2017-18        | 120.82                                      |   |                          |
| 2018-19        | 263.82                                      |   |                          |

The CSR budget as per the 2 % rule of Companies Act, 2013 (i.e. 2% of the net average profits of the last three years) for the financial year 2019-20 was Rs. 300.01 lakhs.

### CSR Expenditure F.Y. 2019-20

#### **Details of CSR spent during the financial year**

**a) Total Amount to be spent for the financial year:**

The expenditure incurred on CSR, during F.Y. 2019-20 was Rs.307.287 Lakhs against the total budget as per 2% rule was Rs. 300.01 Lakhs. Whereas the total projects/activities under CSR were sanctioned amounting to Rs. 376.55 Lakhs.

**b) Amount Unspent, if any:**

NIL

**c) Manner in which the amount spent during the financial year 2019-20 is detailed below**

| 1       | 2   | 3   | 4  | 5                           | 6   | 7   | 8   |
|---------|---|---|--|-----------------------------|---|---|---|
| Sl. No. | CSR Project or activity identified.   | Sector in which the project is covered.   | Projects or Programs<br>1) Local Area or other<br>2) Specify the state district where projects or programs was undertaken. | Amount Outlay( Rs in Lakhs) | Amount spent on the projects or programs Sub-Heads:<br>1) Direct expenditure on projects or programs.<br>2) Overheads (Rs in Lakhs) | Cumulative expenditure up to the reporting period (Rs in Lakhs) | Amount spent: Direct or through implementing agency |
| 1       | Spill over: Construction of first floor of hostel cum computer centre with site development main gate work for blind students of Brajkishore Public Educational Society.                                      | Point II, Schedule 7: Promoting Education | Ranchi, Jharkhand, Jharkhand   | 4                           | Direct Expenditure  | 1.11  | Directly(through internal resources)                |
| 2       | Spill over: Promoting education among the poor needy sections of the society through providing scholarship, Sponsorship and other aids to the students of Gondwana Primary School, Dist. Ranchi, Jharkhand    | Point II, Schedule 7: Promoting Education | Ranchi, Jharkhand  | 2.5                         | Direct Expenditure  | 1.21  | Directly (through internal resources)               |
| 3       | Spill over: Promoting education among the poor needy section of society through providing scholarship, sponsorship and other aids to the students of Brisa Uccha Vidhalaya, Dam side Dist. Ranchi, Jharkhand. |   |  |                             |   |   |   |



|   |   |  |                   |       |                    |       |                                      |
|---|---|--|-------------------|-------|--------------------|-------|--------------------------------------|
|   |   |  |                   |       |                    |       |                                      |
| 4 | Support for education of 72 destitute/orphans/socially & economically backward students from Sembo and adjoining areas. Dist. Ranchi, Jharkhand                           | Point II, Schedule 7: Promoting Education                      | Ranchi, Jharkhand | 3.84  | Direct Expenditure | 3.84  | Directly(through internal resources) |
| 5 | Support for education and skill development of 12 no. of visually impaired girl students at Brajkishore Netraheen Balika Vidhyalaya                                       | Point II, Schedule 7: Promoting Education                      | Ranchi, Jharkhand | 2.3   | Direct Expenditure | 2.30  | Directly(through internal resources) |
| 6 | Proposal on construction of two number of cottage for the needy elderly at the campus of old age home at village, Kulgu, Kalendey, Block-Nagri, Dist. Ranchi, Jharkhand   | Point iii, Schedule VII: Home for old age                      | Ranchi, Jharkhand | 0     | Direct Expenditure | 0.00  | Directly(through internal resources) |
| 7 | Promoting education among the poor and needy sections of society through providing scholarship, sponsorship and other aids to Gondwana Primary School, Ranchi, Jharkhand. | Point II, Schedule 7: Promoting Education                      | Ranchi, Jharkhand | 2.4   | Direct Expenditure | 2.40  | Directly(through internal resources) |
| 8 | Promoting education among the poor and needy sections of society through providing scholarship, sponsorship and other aids to Brisa Uccha Vidhyalaya, Ranchi, Jharkhand.  | Point II, Schedule 7: Promoting Education                      | Ranchi, Jharkhand | 11.5  | Direct Expenditure | 9.65  | Directly(through internal resources) |
| 9 | Skill development training in retail marketing along with life skills to 120 youths from Ranchi, Jharkhand district   | Point ii, Schedule VII: Employment Enhancing Vocational skills | Ranchi, Jharkhand | 10.62 | Direct Expenditure | 10.62 | Through Prayas JAC                   |

|    |  |  |                      |      |                    |      |                                      |
|----|--|--|----------------------|------|--------------------|------|--------------------------------------|
| 10 | Educational development through sports to students from Dist. Ranchi, Jharkhand  | Point II, Schedule 7: Promoting Education                      | Ranchi, Jharkhand    | 5.81 | Direct Expenditure | 5.81 | Through Monkey Sports                |
| 11 | Financial Support Under CSR for Hospitalization Cost of 15 Patients at Gandhi Memorial Leprosy Hospital                                    | Point I, Schedule VII: Promoting Healthcare                    | Purulia, West Bengal | 6.11 | Direct Expenditure | 6.11 | Directly(through internal resources) |
| 12 | Training program for 2nd batch of sewing and design course for 15 number of underprivileged women from Kanke area, Dist. Ranchi, Jharkhand | Point ii, Schedule VII: Employment Enhancing Vocational skills | Ranchi, Jharkhand    | 0.46 | Direct Expenditure | 0.46 | Directly(through internal resources) |
| 13 | Distribution of masks & hand sanitizer in view of COVID-19", in Ranchi, Jharkhand district   | Point I, Schedule VII: Promoting Healthcare                    | Ranchi, Jharkhand    | 2.64 | Direct Expenditure | 2.64 | Directly(through internal resources) |
| 14 | Swachhata Action Plan ( CMPDIL HQ )  | Point I, Schedule VII: Promoting Sanitation                    | Ranchi, Jharkhand    | 2    | Direct Expenditure | 0.77 | Directly(through internal resources) |
| 15 | Medical Camps (HQ)   | Point I, Schedule VII: Promoting Healthcare                    | Ranchi, Jharkhand    | 0.25 | Direct Expenditure | 0.03 | Directly(through internal resources) |
| 16 | Medical Camps (HQ & RIs)(Medicine Purchase)  | Point I, Schedule VII: Promoting Healthcare                    | Ranchi, Jharkhand    | 8.0  | Direct Expenditure | 7.94 | Directly(through internal resources) |

|    |   |  |                      |      |                    |      |                                      |
|----|---|--|----------------------|------|--------------------|------|--------------------------------------|
| 17 | Sponsorship to 20 Blind Student from Asansol Braille Academy, Asansol, West Bengal  | Point II, Schedule 7: Promoting Education                      | Asansol, West Bengal | 9.14 | Direct Expenditure | 9.14 | Directly(through internal resources) |
| 18 | Sponsorship to 20 Physically/ Mentally Challenged Student from Asansol Anandam, Asansol, West Bengal                      | Point II, Schedule 7: Promoting Education                      | Asansol, West Bengal | 4.10 | Direct Expenditure | 4.10 | Directly(through internal resources) |
| 19 | Training in computers- software to 90 number of unskilled and unemployed youths of Asansol , West Bengal                  | Point ii, Schedule VII: Employment Enhancing Vocational skills | Asansol, West Bengal | 8.10 | Direct Expenditure | 8.10 | Directly(through internal resources) |
| 20 | Multi-skilled training in Assistant Electrician to 40 number of unskilled and unemployed youths Asansol , West Bengal     | Point ii, Schedule VII: Employment Enhancing Vocational skills | Asansol, West Bengal | 4.60 | Direct Expenditure | 4.60 | Directly(through internal resources) |
| 21 | Swachhata Action Plan ( CMPDIL HQ   | Point I, Schedule VII: Promoting Sanitation                    | Asansol, West Bengal | 2.00 | Direct Expenditure | 2.26 | Directly(through internal resources) |
| 22 | Organization of Medical Camp  | Point I, Schedule VII: Promoting Healthcare                    | Asansol, West Bengal | 0.25 | Direct Expenditure | 0.25 | Directly(through internal resources) |
| 23 | Providing facility for recreation in Rajkiyakrit Laxmi Narayan Vidhya Mandir Uccha Vidhyalaya,Dhansar, Dhanbad, Jharkhand | Point II, Schedule 7: Promoting Education                      | Dhanbad, Jharkhand   | 5.43 | Direct Expenditure | 4.28 | Directly(through internal resources) |

|    |   |   |                    |       |                    |      |                                      |
|----|---|---|--------------------|-------|--------------------|------|--------------------------------------|
| 24 | Skill development training to 20 number of women in sewing, stitching, embroidering and repair of sewing machines from Govindpur Block, Dhanbad, Jharkhand                | Point II, Schedule 7: Promoting Education   | Dhanbad, Jharkhand | 6.928 | Direct Expenditure | 6.93 | Directly(through internal resources) |
| 25 | Swachhata Action Plan ( CMPDIL HQ   | Point I, Schedule VII: Promoting Sanitation | Dhanbad, Jharkhand | 2     | Direct Expenditure | 1.98 | Directly(through internal resources) |
| 26 | Medical Camp  | Point I, Schedule VII: Promoting Healthcare | Dhanbad, Jharkhand | 0.25  | Direct Expenditure | 0.24 | Directly(through internal resources) |
| 27 | Construction of external walls joining different units of school building with gate for Rajkiya Utkramit Madhya Vidhyalaya, Bhaisadon, Dadhu Panchayat,Latehar,Jharkhand. | Point II, Schedule 7: Promoting Education   | Latehar, Jharkhand | 4.4   | Direct Expenditure | 3.98 | Directly(through internal resources) |
| 28 | Construction of boundary wall after dismantling the existing damaged & fallen boundary wall for Utkramit Madhya Vidhyalaya, Chordhara Patraru, Ramgarh, Jharkhand         | Point II, Schedule 7: Promoting Education   | Ramgarh, Jharkhand | 3.5   | Direct Expenditure | 2.88 | Directly(through internal resources) |
| 29 | Construction of platform with shed for cultural programs at Rajkiya Madhya Vidhyalaya,Siram,Bhageya panchayat, Latehar, Jharkhand   | Point II, Schedule 7: Promoting Education   | Latehar, Jharkhand | 2     | Direct Expenditure | 1.85 | Directly(through internal resources) |
| 30 | Construction of platform with shed for cultural programs at Rajkiya Madhya Vidhyalaya, at Dadhu, Balumath, Latehar, Jharkhand   | Point II, Schedule 7: Promoting Education   | Latehar, Jharkhand | 2     | Direct Expenditure | 1.84 | Directly(through internal resources) |

|    |   |  |                    |     |                    |      |                                      |
|----|---|--|--------------------|-----|--------------------|------|--------------------------------------|
| 31 | Construction of toilet block with septic tank, soak pit including water supply arrangement for Rajkiya Utkramit Uchya Vidhyalaya, Kaitha, Ramgarh, Jharkhand. | Point II, Schedule 7: Promoting Education      | Ramgarh, Jharkhand | 3.3 | Direct Expenditure | 3.30 | Directly(through internal resources) |
| 32 | Installation of 6 no. of hand pumps with platform& drainage arrangement at different locations of Dadhu Panchayat,Balumath,Latehar ,Jharkhand                 | Point I, Schedule VII: Drinking water facility | Latehar, Jharkhand | 6   | Direct Expenditure | 5.58 | Directly(through internal resources) |
| 33 | Installation of 6 no. of hand pumps with platform& drainage arrangement at different locations of Bhageya Panchayat, Balumath, Latehar, Jharkhand             | Point I, Schedule VII: Drinking water facility | Latehar, Jharkhand | 5.7 | Direct Expenditure | 4.91 | Directly(through internal resources) |
| 34 | Installation of 4 no. of hand pumps with platform& drainage arrangement at different locations of Badgaon Panchayat,Tandwa,Chatra ,Jharkhand                  | Point I, Schedule VII: Drinking water facility | Chatra, Jharkhand  | 3.8 | Direct Expenditure | 3.81 | Directly(through internal resources) |
| 35 | Installation of 4 no. of hand pumps with platform& drainage arrangement at different locations of Lapra Panchayat, Khalari, Dist. Ranchi, Jharkhand           | Point I, Schedule VII: Drinking water facility | Ranchi, Jharkhand  | 3.8 | Direct Expenditure | 3.37 | Directly(through internal resources) |
| 36 | Installation of 3 no. of hand pumps with platform& drainage arrangement at different locations of Mayapur Panchayat, Khalari, Dist. Ranchi, Jharkhand         | Point I, Schedule VII: Drinking water facility | Ranchi, Jharkhand  | 3   | Direct Expenditure | 2.69 | Directly(through internal resources) |

|    |   |  |                         |       |                    |      |                                      |
|----|---|--|-------------------------|-------|--------------------|------|--------------------------------------|
| 37 | Installation of 7 no. of hand pumps with platform& drainage arrangement at different locations of Chalkari Panchayat, Peterwar, Jharkhand | Point I, Schedule VII: Drinking water facility       | Bokaro, Jharkhand       | 5.7   | Direct Expenditure | 5.06 | Directly(through internal resources) |
| 38 | Installation of 6 no. of hand pumps with platform& drainage arrangement at different locations of Pichhari Panchayat, Peterwar, Jharkhand | Point I, Schedule VII: Drinking water facility       | Bokaro, Jharkhand       | 4.8   | Direct Expenditure | 4.24 | Directly(through internal resources) |
| 39 | Swachhata Action Plan   | Point I, Schedule VII: Promoting Sanitation          | Ranchi, Jharkhand       | 2     | Direct Expenditure | 2.00 | Directly(through internal resources) |
| 40 | Medical Camp  | Point I, Schedule VII: Promoting Healthcare          | Ranchi, Jharkhand       | 0.25  | Direct Expenditure | 0.24 | Directly(through internal resources) |
| 41 | Spill over: Construction of Mid-day meal shed at Zila parishad Uchh Prathmik Shala, Kolara, Chimur, Chandrapur, Maharashtra.              | Point II, Schedule 7: Promoting Education            | Chandrapur, Maharashtra | 6.889 | Direct Expenditure | 6.89 | Directly(through internal resources) |
| 42 | Spill over: Construction of Mid-day meal shed at Uccha Prathmik Shala, Nandori, Chandrapur, Maharashtra.                                  | Point II, Schedule 7: Promoting Education            | Chandrapur, Maharashtra | 1.785 | Direct Expenditure | 1.79 | Directly(through internal resources) |
| 43 | Spill over: Installation of 15 no. of solar street lights in Gopalpur Gram Panchayat Rampia block, Odisha                                 | Point iv, Schedule VII: Environmental Sustainability | Sundergarh, Odisha      | 0.246 | Direct Expenditure | 0.25 | Directly(through internal resources) |
| 44 | Spill over: Installation of 6 kW Solar Panel at Zila Parishad Uccha Prathmik Shala, Anandwan, Maharashtra.                                | Point iv, Schedule VII: Environmental Sustainability | Chandrapur, Maharashtra | 3.49  | Direct Expenditure | 3.49 | Directly(through internal resources) |

|    |  |  |                         |       |                    |       |                                      |
|----|--|--|-------------------------|-------|--------------------|-------|--------------------------------------|
| 45 | Construction of boundary wall, school gate, checker flooring & other misc. works at Zila Parishad Prathmik Shala   | Point II, Schedule 7: Promoting Education            | Chandrapur, Maharashtra | 14.99 | Direct Expenditure | 13.73 | Directly(through internal resources) |
| 46 | Construction of boundary wall and checker flooring at Anaganwadi Kendra  | Point II, Schedule 7: Promoting Education            | Chandrapur, Maharashtra | 14.99 | Direct Expenditure |       | Directly(through internal resources) |
| 47 | Installation of 5 KW solar Plant at Zila Parishad Prathmik Shala   | Point iv, Schedule VII: Environmental Sustainability | Chandrapur, Maharashtra | 3.15  | Direct Expenditure | 2.71  | Directly(through internal resources) |
| 48 | Construction of village road at Bandra village, Kendra-Yensa, Panchayat Samiti-Warora, Dist.-Chandrapur, Maharashtra   | Point x of Schedule 7: Rural Development Projects    | Chandrapur, Maharashtra | 20.76 | Direct Expenditure | 20.75 | Directly(through internal resources) |
| 49 | Providing 1 No. of Bookshelf and 50 No. of Glasses at Zila Parishad Uchch Prathmik Shala, kendra-Durgapur, Panchayat Samiti-Chandrapur, Dist-Chandrapur, Maharashtra | Point II, Schedule 7: Promoting Education            | Chandrapur, Maharashtra | 0.38  | Direct Expenditure | 0.10  | Directly(through internal resources) |
| 50 | Providing 1 No. of Bookshelf and at Zila Parishad Prathmik Shala, Payali, kendra-Padampur, Panchayat Samiti-Chandrapur, Dist-Chandrapur, Maharashtra                 | Point II, Schedule 7: Promoting Education            | Chandrapur, Maharashtra |       | Direct Expenditure | 0.08  | Directly(through internal resources) |
| 51 | Providing 2 No. of Amirah at Zila Parishad Prathmik Shala, Pimpalgaon, Kendra-Yensa, Panchayat Samiti-Warora, Dist-Chandrapur, Maharashtra                           | Point II, Schedule 7: Promoting Education            | Chandrapur, Maharashtra |       | Direct Expenditure | 0.20  | Directly(through internal resources) |

|    |  |  |                         |       |                    |      |                                      |
|----|--|--|-------------------------|-------|--------------------|------|--------------------------------------|
| 52 | Installation of Water Filter Plant at Boregaon, Warora   | Point I, Schedule VII: Drinking water facility | Chandrapur, Maharashtra | 14.34 | Direct Expenditure | 0.00 | Directly(through internal resources) |
| 53 | Swachhata Action Plan  | Point I, Schedule VII: Promoting Sanitation    | Nagpur, Maharashtra     | 2     | Direct Expenditure | 2.01 | Directly(through internal resources) |
| 54 | Medical Camp Organization  | Point I, Schedule VII: Promoting Healthcare    | Chandrapur, Maharashtra | 0.25  | Direct Expenditure | 0.24 | Directly(through internal resources) |
| 55 | Spill over: Construction of rooms of total area 1600 sq. feet for patients and their attendants at Jan Swastha Sahyog, Ganiyari near Korba camp, Bilaspur. | Point I, Schedule VII: Promoting Healthcare    | Bilaspur, Chhattisgarh  | 8.30  | Direct Expenditure | 7.67 | Directly(through internal resources) |
| 56 | Spill over: Digging of bore well and providing drinking water connection at Lamdand village, Kudumkela Camp.   | Point I, Schedule VII: Drinking water facility | Raigarh, Chhattisgarh   | 2.39  | Direct Expenditure | 2.39 | Directly(through internal resources) |
| 57 | Solar Power system installation including accessories at Hostel building of Govt. Blind and Deaf School, Bilaspur, Chhattisgarh                            | Point II, Schedule 7: Promoting Education      | Bilaspur, Chhattisgarh  | 10.00 | Direct Expenditure | 6.24 | Directly(through internal resources) |
| 58 | Solar Electrification of Jan Swastha Sahyog Kendra, Ganiyari, Chhattisgarh   | Point I, Schedule VII: Promoting Healthcare    | Bilaspur, Chhattisgarh  | 15.00 | Direct Expenditure | 8.18 | Directly(through internal resources) |
| 59 | Construction of shed with stage at Govt. High School (Girls and Boys) at Khamtarai, Panchayat Bilha, Dist.- Bilaspur, Chhattisgarh.                        | Point II, Schedule 7: Promoting Education      | Bilaspur, Chhattisgarh  | 10.00 | Direct Expenditure | 7.83 | Directly(through internal resources) |



|    |   |   |                           |      |                    |      |                                      |
|----|---|---|---------------------------|------|--------------------|------|--------------------------------------|
| 60 | Swachhata Action Plan   | Point I, Schedule VII: Promoting Sanitation | Bilaspur, Chhattisgarh    | 2.00 | Direct Expenditure | 1.87 | Directly(through internal resources) |
| 61 | Medical Camp Organization   | Point I, Schedule VII: Promoting Healthcare | Bilaspur, Chhattisgarh    | 0.25 | Direct Expenditure | 0.24 | Directly(through internal resources) |
| 62 | Supply of 77 nos. of 3 Seater Wooden Desk and Benches to 3 No. of Govt. Schools (a) Shashkiya High School, Bandha(20 No's), (b) Shashkiya Poorva Madhyamika Vidhyalaya, Morwoa(17 No.) © Shashkiya High School, Nawanagar(40 nos.)  | Point II, Schedule 7: Promoting Education   | Singrauli, Madhya Pradesh | 3.43 | Direct Expenditure | 3.39 | Directly(through internal resources) |
| 63 | Providing and Fixing Tube well with Submersible Pump and PVC Water Tank Including Pipe Fitting at 2 Nos. of Govt School: (a) Providing and fixing tube well with 1 HP submersible pump and OH PVC (1000+) water tank including pipe fitting at Shashkiya Poorva Madhyamika Vidhyalaya, Morwoa (b) Providing and fixing tube well with 2 HP submersible pump and OH PVC (2000+) water tank including pipe fitting at Shashkiya High School, Bandha | Point II, Schedule 7: Promoting Education   | Singrauli, Madhya Pradesh | 8.00 | Direct Expenditure | 6.38 | Directly(through internal resources) |
| 64 | Providing and Fixing Water Purifier cum cooler(Heavy duty) at Shashkiya High School, Nawanagar, Waidhan, Singrauli, MP  | Point II, Schedule 7: Promoting Education   | Singrauli, Madhya Pradesh | 0.72 | Direct Expenditure | 0.78 | Directly(through internal resources) |

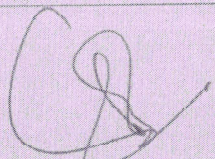
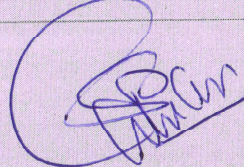
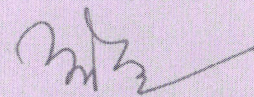
|    |  |   |                           |       |                    |       |                                      |
|----|--|---|---------------------------|-------|--------------------|-------|--------------------------------------|
| 65 | Swachhata Action Plan  | Point I, Schedule VII: Promoting Sanitation       | Singrauli, Madhya Pradesh | 2.00  | Direct Expenditure | 2.00  | Directly(through internal resources) |
| 66 | Medical Camp Organization  | Point I, Schedule VII: Promoting Healthcare       | Singrauli, Madhya Pradesh | 0.25  | Direct Expenditure | 0.00  | Directly(through internal resources) |
| 67 | Spill over: Construction of Kalyan Mandap for villagers congregation at Bada Chandgudia Village near Kosala camp, Orissa     | Point x of Schedule 7: Rural Development Projects | Angul, Odisha             | 2.55  | Direct Expenditure | 2.30  | Directly(through internal resources) |
| 68 | Spill over: Construction/repair of boundary wall with water supply arrangement in Bahiali UP School near Kosala Camp, Orissa | Point x of Schedule 7: Rural Development Projects | Angul, Odisha             | 1.5   | Direct Expenditure | 0.59  | Directly(through internal resources) |
| 69 | Construction of room with provision of fixture and furniture for Heat Stress patients at Kosala Community Health Centre.     | Point I, Schedule VII: Promoting Healthcare       | Angul, Odisha             | 8.06  | Direct Expenditure | 8.72  | Directly(through internal resources) |
| 70 | Construction of toilet block for boys in Shishu Ananta Mahavidhyalaya, Balipatana  | Point II, Schedule 7: Promoting Education         | Khurda, Odisha            | 7.49  | Direct Expenditure | 7.84  | Directly(through internal resources) |
| 71 | Construction of classroom with provision of electrical appliances for Bapuji Govt.UP School,Godakana, Bhubaneswar            | Point II, Schedule 7: Promoting Education         | Khurda, Odisha            | 13.2  | Direct Expenditure | 12.37 | Directly(through internal resources) |
| 72 | Construction of boys common in Shishu Ananta Mahavidhyalaya, Balipatana, Dist:Khurda   | Point II, Schedule 7: Promoting Education         | Khurda, Odisha            | 16.95 | Direct Expenditure | 13.06 | Directly(through internal resources) |



|       |  |   |                |        |                    |         |                                      |
|-------|--|---|----------------|--------|--------------------|---------|--------------------------------------|
| 73    | Construction of toilet block with water supply arrangement at OSAP Govt. High School, Near CMPDIL Colony | Point II, Schedule 7: Promoting Education   | Khurda, Odisha | 10.46  | Direct Expenditure | 10.81   | Directly(through internal resources) |
| 74    | Construction of toilet block with water supply arrangement for slum dwellers Near CMPDIL Colony          | Point XI, Schedule VII: Slum Development    | Khurda, Odisha | 27.99  | Direct Expenditure | 7.68    | Directly(through internal resources) |
| 75    | Swachhata Action Plan  | Point I, Schedule VII: Promoting Sanitation | Khurda, Odisha | 2      | Direct Expenditure | 1.98    | Directly(through internal resources) |
| 76    | Medical Camp Organization  | Point I, Schedule VII: Promoting Healthcare | Khurda, Odisha | 0.25   | Direct Expenditure | 0.23    | Directly(through internal resources) |
| Total |  |   |                | 376.55 |                    | 307.287 |                                      |

The expenditure incurred on CSR, during 2019-20 was Rs.307.287 Lakhs against the total budget Amount as per 2% rule was Rs. 300.01 Lakhs. Whereas the total activities were sanctioned amounting to Rs. 376.55 Lakhs.

This is to certify that the implementation and monitoring of CSR activities is in compliance of CSR objectives and Policy of CMPDIL.

|   |  |   |
|---|--|---|
|  |  |  |
| (Shekhar Saran)<br>Chairman-cum-Managing Director, CMPDIL.                        | (Pramod Singh Chauhan)<br>Chairman CSR Committee, CMPDIL.                          | (Alok Kumar)<br>Nodal Officer CSR   |





**cmpdi**  
A Mini Ratna Company



| Regional Institute - I   | Regional Institute - II  |
|--|--|
| <p>Central Mine Planning &amp; Design Institute Limited<br/>Regional Institute - I<br/>West End, G.T.Road<br/>Asansol - 713 301 (WB), India<br/>Tel: +91 341 2253504<br/>Fax: +91 341 2250935<br/>email: rdri1[dot]cmpdi[at]coalindia[dot]in</p>   | <p>Central Mine Planning &amp; Design Institute Limited<br/>Regional Institute - II<br/>Koyala Bhawan, Koyla Nagar<br/>Dhanbad - 826 005 (Jharkhand), India<br/>Tel: +91 326 2230789<br/>Fax: +91 326 2230500<br/>email: rdri2[dot]cmpdi[at]coalindia[dot]in</p>                                   |
| Regional Institute - III   | Regional Institute - IV  |
| <p>Central Mine Planning &amp; Design Institute Limited<br/>Regional Institute - III<br/>CMPDI Campus<br/>Gondwana Place, Kanke Road<br/>Ranchi - 834 031 (Jharkhand), India<br/>Tel: +91 651 2231506<br/>Fax: +91 651 2231501<br/>email: rdri3[dot]cmpdi[at]coalindia[dot]in</p>                  | <p>Central Mine Planning &amp; Design Institute Limited<br/>Regional Institute - IV<br/>Kasturba Nagar, Jaripatka,<br/>Nagpur - 440 014 (Maharashtra), India<br/>Tel: +91 712 2642134<br/>Fax: +91 712 2643231<br/>email: rdri4[dot]cmpdi[at]coalindia[dot]in</p>                                  |
| Regional Institute - V   | Regional Institute - VI  |
| <p>Central Mine Planning &amp; Design Institute Limited<br/>Regional Institute - V<br/>CMPDI Complex, Seepat Road<br/>Bilaspur - 495 006 (Chattisgarh), India<br/>Tel: +91 7752 246482<br/>Fax: +91 7752 246481<br/>email: rdri5[dot]cmpdi[at]coalindia[dot]in</p>                                 | <p>Central Mine Planning &amp; Design Institute Limited<br/>Regional Institute - VI<br/>P.O. Jayant Colliery<br/>Distt. - Singrauli<br/>PIN : 486 890 (Madhya Pradesh), India<br/>Tel: +91 7805 222172, 222329, 277600<br/>Fax: +91 7805 222330<br/>email: rdri6[dot]cmpdi[at]coalindia[dot]in</p> |
| Regional Institute - VII   |  |
| <p>Central Mine Planning &amp; Design Institute Limited<br/>Regional Institute - VII<br/>Plot No. E-4, Near Gandhi Park<br/>At Samantapuri, PO: RRL<br/>Bhubaneswar - 751 001 (Odisha), India<br/>Tel: +91 674 2301271<br/>Fax: +91 674 2301762<br/>email: rdri7[dot]cmpdi[at]coalindia[dot]in</p> |  |